



JHK
T-SHIRT

2020 COLLECTION

www.jhktshirt.com


ICONOGRAPHY

 **BOX**
Number of garments per box.

 **PACK**
Number of garments per pack.

 **NEW PRODUCT**
New reference in this catalog.

 **NEW COLOR/SIZE**
New color or size in this catalog.

 **TEAR AWAY LABEL**
The label can be easily removed.

 **100% COTTON**
100% natural fiber.

 **SLIM FIT**
Slightly fitted.

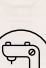
 **KING SIZE**
Available in large sizes.

 **SCREEN PRINTING**
Garment suitable for screen printing.

 **HEAT TRANSFER**
Garment suitable for textile transfer.

 **SUBLIMATION**
Garment suitable to sublimates.

 **DIGITAL PRINTING**
Garment suitable for digital printing.

 **EMBROIDERY**
Garment suitable for embroidery.

* Testing is recommended before handling large quantities to ensure that the machine settings are appropriate.



INDEX

**OCEAN**



04-11

**REGULAR**



12-53

**CURVES**



54-57

**SUBLI**



58-65

**BUSINESS**



66-73

**WINTER**



74-103

**URBAN**



104-131

**SPORT**



132-143

**ACTIVE**



144-153

Place your order **online**



- ✔ More comfortable
- ✔ Faster
- ✔ More advantages



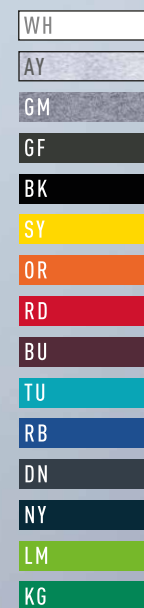
OCEAN LINE



REF: TSOCEAN



S	48/69
M	50/70
L	53/73
XL	56/74
XXL	58/77



REF: TSLOCEAN



S	40/60
M	42/61
L	44/63
XL	46/64
XXL	48/66



REF: TSKOCEAN



3/4	32/44
5/6	35/49
7/8	38/52
9/11	41/58
12/14	43/61



OCEAN POLO
REF: POLOCEAN

Piqué fabric. Two-button placket with bottom box-stitch reinforcement. 1x1 rib on collar. Without side vents. Enzyme wash. 175 g/m² approx. 100% Preshrunk cotton



S	50/68
M	52/70
L	54/72
XL	56/74
XXL	60/78

WH
GM
BK
SY
OR
RD
BU
RB
NY
KG



OCEAN CREW NECK
SWEATSHIRT
REF: SWOCECR

Double needle collar, cuffs and waistband for extra durability. Self-fabric cuffs and waistband. 260 - 265 g/m² approx. 65% Polyester / 35% Cotton



XS	51/63
S	54/66
M	57/69
L	60/72
XL	63/76
XXL	66/78
3XL	70/81

WH
AY
BK
RD
RB
NY



UNISEX OCEAN SPORT
REF: SPORTOCEAN

Performance t-shirt. Side-seamed. 130 g/m² approx. 100% Polyester



S	50/66
M	52/68
L	54/70
XL	56/72
XXL	58/77

WH
GF
BK
RD
TU
RB
NY

FLUOR
SYF
ORF
LMF

NEW FINISH
WITH POSSIBILITY OF DRYING | 180°



OCEAN KANGAROO
REF: SWOCEKNG

Dyed-to-match drawcord. Pouch pocket for extra carry. Self-fabric cuffs and waistband. 260 - 265 g/m² approx. 65% Polyester / 35% Cotton



XS	50/67
S	52/68
M	54/69
L	56/70
XL	58/71
XXL	60/72
3XL	62/74

WH
AY
BK
RD
RB
NY



UNISEX OCEAN
HOODED CONTRAST
KANGAROO
REF: SWOCECTR

Hood with contrast lining.
Dyed-to-match drawcord.
Pouch pocket for extra carry.
Self-fabric cuffs and waistband.
260 - 265 g/m² approx.
65% Polyester / 35% Cotton



XS	50/67
S	52/68
M	54/69
L	56/70
XL	58/71
XXL	60/72

WH	NY
AS	NY
BK	AS
RD	NY
PK	GM
NY	AS





REGULAR LINE



MAN REGULAR T-SHIRT

REF: TSRA150

Tubular fit. Double needle stitching in collar, sleeves and bottom hem for extra durability. Shoulder-to-shoulder taping. Ribbed collar with elastane. CM and Fluor side-seamed. 155 g/m² approx. 100% Preshrunk cotton AS - 98% Cotton / 2% Viscose GM - 85% Cotton / 15% Viscose Fluor - 100% Polyester



WH	SK
AS	TU
GM	AZ
ZC	AQ
GF	RB
BK	SB
LY	DN
SY	NY
MU	IB
PH	MG
TG	KG
OR	LM
BC	PT
WR	BG
RD	FG
CR	CM
BU	KH
CA	AG
RP	AR
FU	LS
AL	SA
PK	WA
LV	BR
PU	CH

NEON	FLUOR
LYN	SYF
QRN	ORF
PKN	FUF
SKN	LMF



WLT

REF: TSRA150WLT

T-Shirt 4 cm longer, prepared for dyeing. (From XS to 3XL)



PAG. 18
REF: TSRLCMF



PAG. 44
REF: TSRK150



XS	S	M	L	XL	XXL	3XL*	4XL	5XL
48/68	51/70	53/72	56/74	58/76	61/78	66/82	68/84	72/88

KING SIZE

REF: TSRA150KS



WH	GM	BK	SY
OR	RD	RB	NY

Colors in size 3XL*

WH	WLT	GM	GF	BK	SY	OR	RD	TU	RB
DN	NY	KG	LM						



MAN REGULAR T-SHIRT

REF: TSRA150

Side-seamed. Double needle stitching in collar, sleeves and bottom hem for extra durability.
Ribbed collar with elastane.
155 g/m² approx.
65% Polyester / 35% Cotton
DNH - 60% Cotton / 40% Polyester



XS	48/68
S	51/70
M	53/72
L	56/74
XL	58/76
XXL	61/78

LADY REGULAR COMFORT

REF: TSRLCMF

Slightly fitted. Side-seamed.
Double needle stitching in collar, sleeves and bottom hem for extra durability.
155 g/m² approx.
65% Polyester / 35% Cotton
DNH - 60% Cotton / 40% Polyester



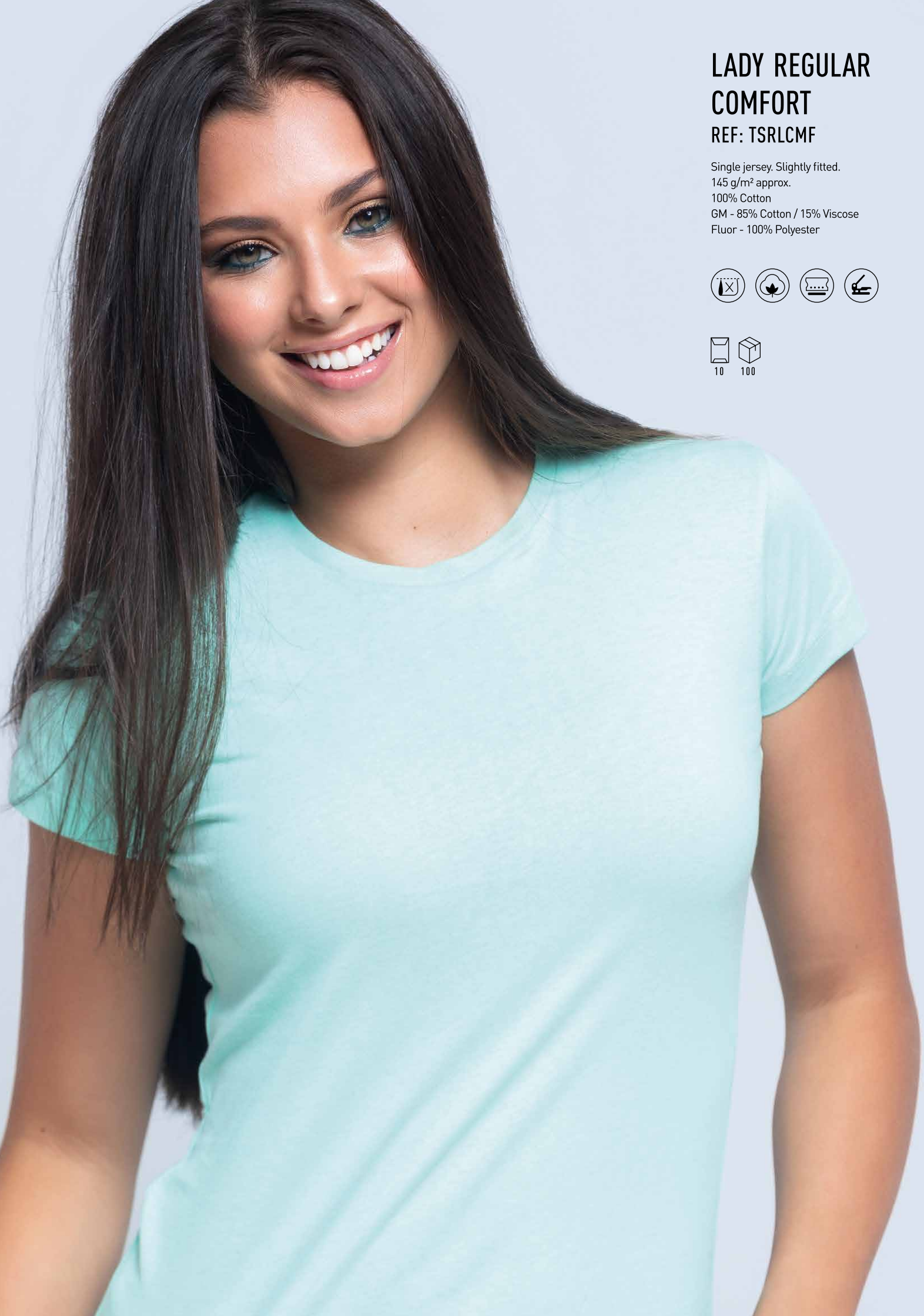
S	42/60
M	44/62
L	46/64
XL	48/66
XXL	50/68



CHCH
MUH
BUH
LVH
TUH
DNH
BGH



Heather
Colours



LADY REGULAR COMFORT

REF: TSRLCMF

Single jersey. Slightly fitted.
145 g/m² approx.
100% Cotton
GM - 85% Cotton / 15% Viscose
Fluor - 100% Polyester



- WH
- GM
- BK
- SY
- OR
- RD
- BU
- CA
- RP
- FU
- AL
- PK
- PU
- SK
- TU
- AZ
- AQ
- RB
- NY
- MG
- KG
- LM
- BG
- CM
- CH

FLUOR

- SYF
- FUF



WLT

REF: TSRLCMFWLT

T-Shirt 4 cm longer,
prepared for dyeing.
(From S to XXL)



S	M	L	XL	XXL
42/60	44/62	46/64	48/66	50/68

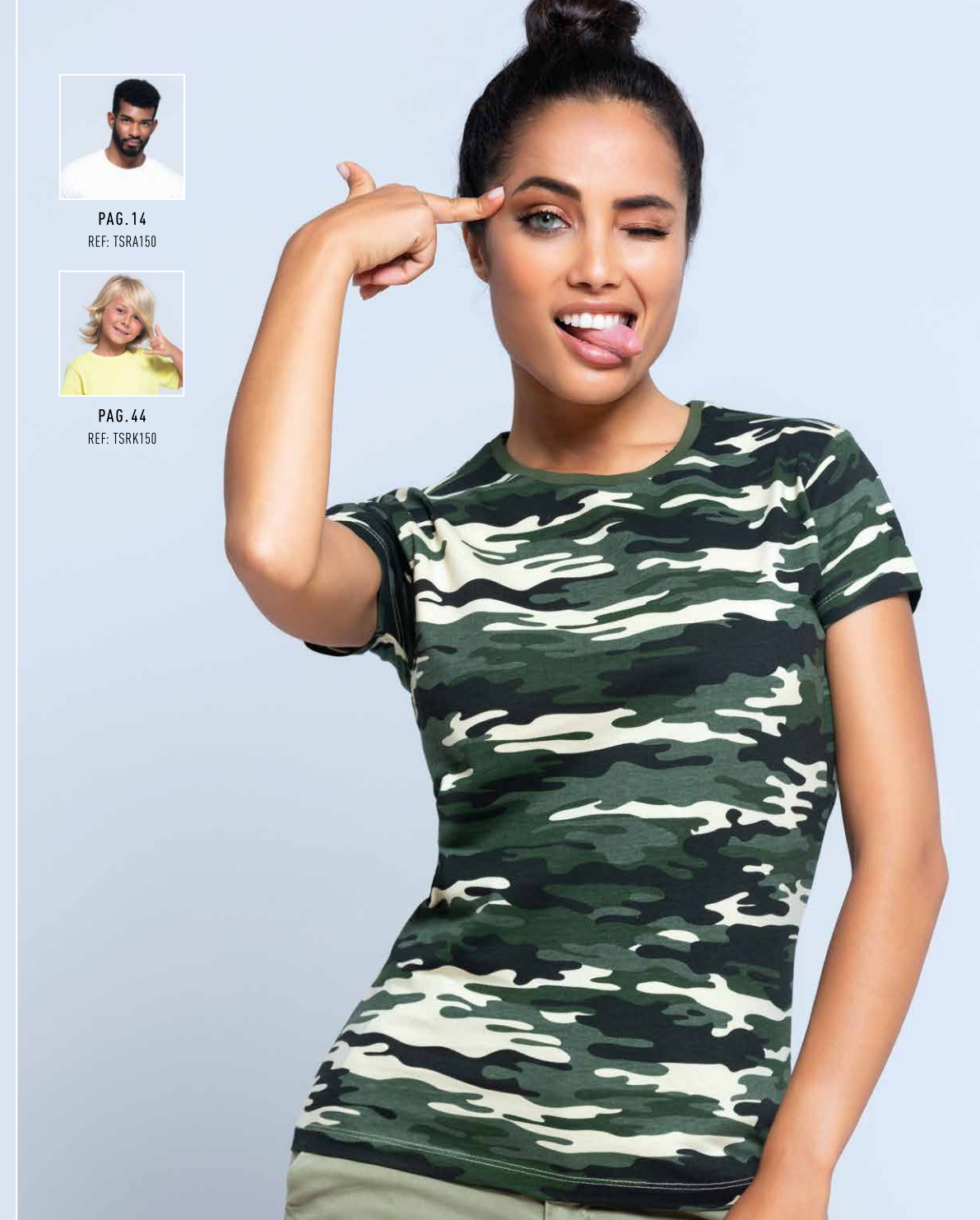
SIZES
for ladies



PAG. 14
REF: TSRA150



PAG. 44
REF: TSRK150



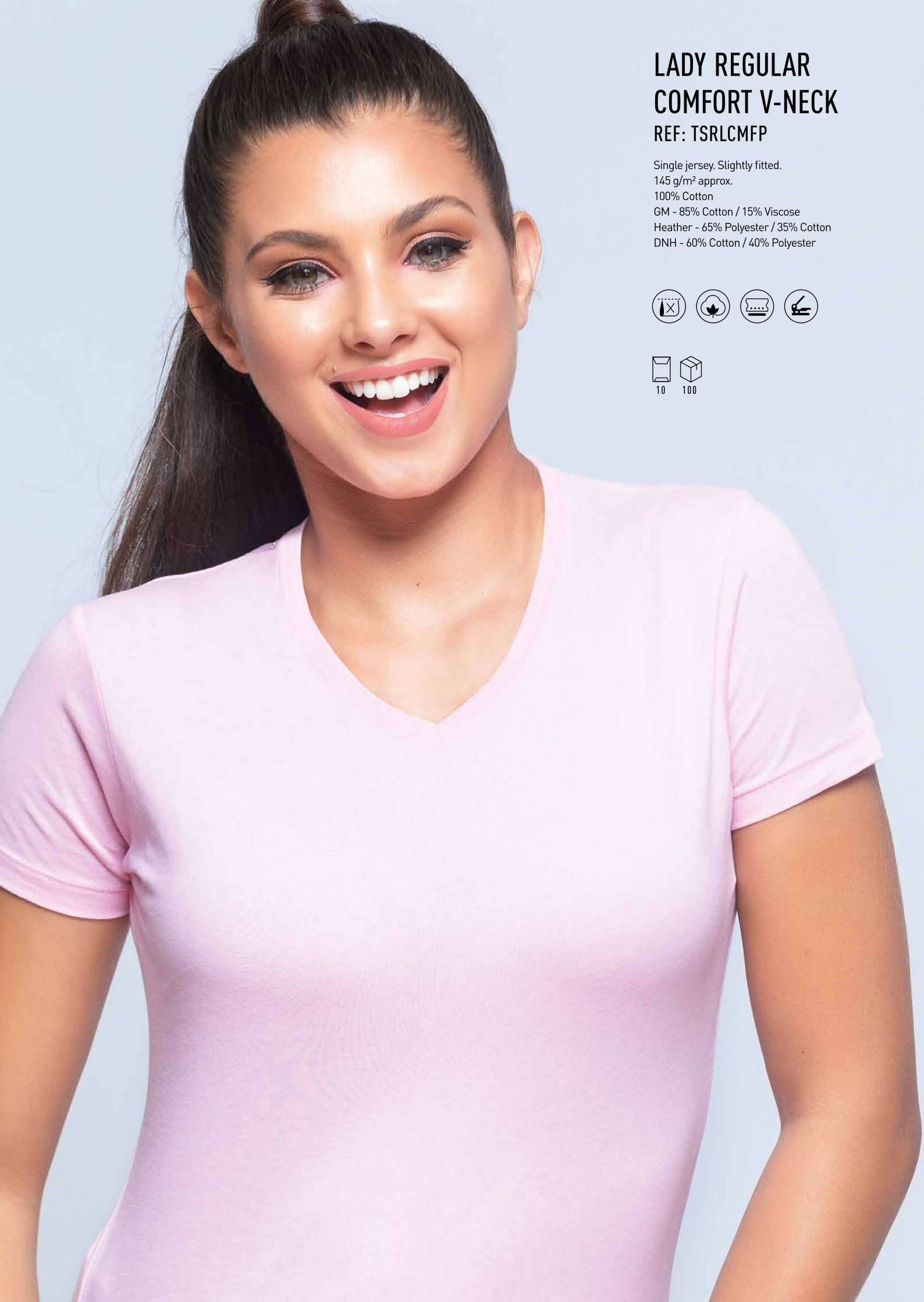
REF: CURVS150

PAG. 56

S	M	L	XL
53/70	56/73	59/74	62/76

- WH
- GM
- BK
- RD
- FU
- TU
- RB
- NY
- LM





LADY REGULAR
COMFORT V-NECK
REF: TSRLCMFP

Single jersey. Slightly fitted.
145 g/m² approx.
100% Cotton
GM - 85% Cotton / 15% Viscose
Heather - 65% Polyester / 35% Cotton
DNH - 60% Cotton / 40% Polyester



WH
GM
BK
RD
FU
PK
PU
TU
RB
NY
LM



PAG.112
REF: TSUAPICO

Heather
Colours

CHCH
MUH
BUH
LVH
TUH
DNH
BGH



S	M	L	XL	XXL
42/60	44/62	46/64	48/66	50/68

SIZES
for ladies



REF: CURVSPICO

PAG.56

S	M	L	XL
53/70	56/73	59/74	62/76

WH
GM
BK
RD
FU
TU
RB
NY
LM



REGULAR DIGITAL PRINT

REF: TSR160DGP

Combed cotton t-shirt. Tubular fit.
Double needle stitching in collar,
sleeves and bottom hem for extra durability.
1x1 rib on collar. Shoulder-to-shoulder taping
160 g/m² approx.
100% Combed cotton



S	48/68
M	51/70
L	53/72
XL	56/74
XXL	58/76
3XL	61/78

WH

* T-shirt treated for digital printing.



REGULAR COMBED T-SHIRT

REF: TSR160COMB

Combed cotton t-shirt. Tubular fit. Double needle stitching
in collar, sleeves and bottom hem for extra durability.
1x1 rib on collar. Shoulder-to-shoulder taping
160 g/m² approx.
100% Combed cotton
AS - 98% Cotton / 2% Viscose
GM - 85% Cotton / 15% Viscose



S	48/68
M	51/70
L	53/72
XL	56/74
XXL	58/76
3XL	61/78

WH
AS
GM
GF
BK
SY
OR
RD
BU
RB
NY
BG

REGULAR ORGANIC
T-SHIRT

REF: TSR160ORG

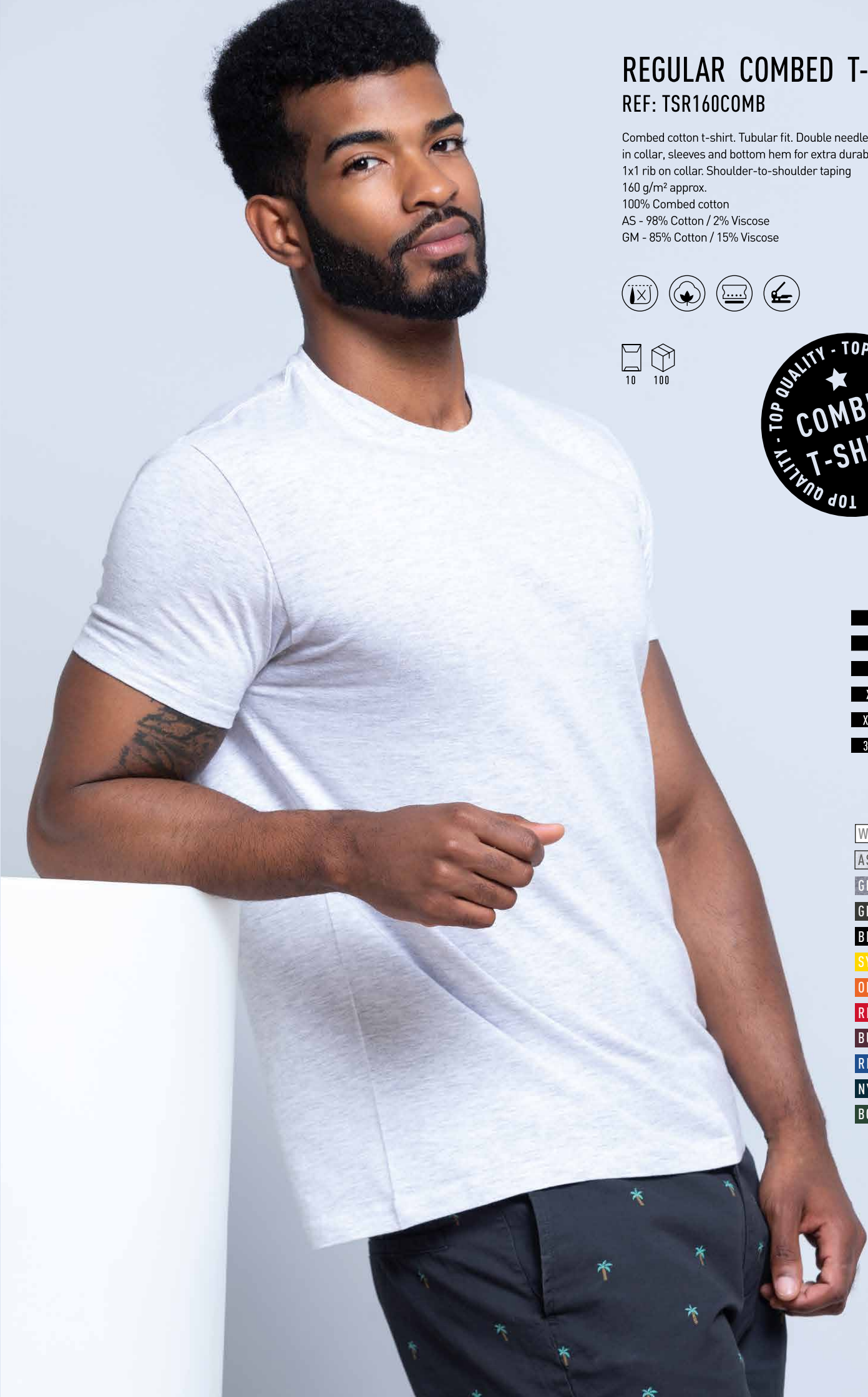
Tubular fit. Double needle stitching in collar,
sleeves and bottom hem for extra durability.
1x1 rib on collar. Shoulder-to-shoulder taping.
160 g/m² approx.
100% Cotton



S	48/68
M	51/70
L	53/72
XL	56/74
XXL	58/76
3XL	61/78

WH

BK



LADY REGULAR
PREMIUM T-SHIRT
REF: TSRLPRM

Side-seamed.
Slightly fitted.
Single jersey.
170 g/m² approx.
100% Preshrunk cotton
GM - 85% Cotton / 15% Viscose



	PFD	
	A/B	
S	42/62	44/66
M	44/63	46/68
L	46/64	48/70
XL	48/66	50/72
XXL	50/68	52/74
3XL	52/70	54/76

WH
GM
BK
RD
FU
RB
NY
KG

PREPARED FOR DYEING
PFD



REGULAR HIT T-SHIRT
REF: TSRA170

Tubular fit. Double needle stitching in collar,
sleeves and bottom hem for extra durability.
Ribbed collar with elastane.
Shoulder-to-shoulder taping.
170 g/m² approx.
100% Preshrunk cotton
AS - 98% Cotton / 2% Viscose
GM - 85% Cotton / 15% Viscose



WH
AS
GM
GF
BK
SY
OR
RD
CA
RB
NY
BG



	KING SIZE										REF: TSRA170KS			
	XS	S	M	L	XL	XXL	3XL	4XL	5XL					
	48/68	51/70	53/72	56/74	58/76	61/78	66/82	68/84	72/88	WH	GM	BK	RD	
										RB	NY	BG		



REGULAR PREMIUM
T-SHIRT
REF: TSRA190

Tubular fit. Double needle stitching in collar, sleeves and bottom hem for extra durability.
Ribbed collar with elastane.
Shoulder-to-shoulder taping.
180 - 185 g/m² approx.
100% Preshrunk cotton
AS - 98% Cotton / 2% Viscose
GM - 85% Cotton / 15% Viscose



- WH
- AS
- GM
- GF
- BK
- SY
- PH
- OR
- RD
- BU
- RP
- PK
- LV
- PU
- SK
- TU
- AZ
- RB
- NY
- PG
- KG
- PT
- BG
- FG
- KH
- SA
- CH

PREPARED FOR DYEING
PFD



PAG. 46
REF: TSRK190



XS	S	M	L	XL	XXL	3XL	4XL	5XL
48/68	51/70	53/72	56/74	58/76	61/78	66/82	68/84	72/88
PFD	50/70	53/73	56/76	59/79	63/82	66/85		

KING SIZE

REF: TSRA190KS

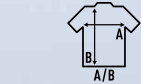


WH	GM	BK	SY
RD	RB	NY	BG

REGULAR LS T-SHIRT

REF: TSRA150LS

Double needle stitching in collar, sleeves and bottom hem for extra durability.
Ribbed collar with elastane.
Shoulder-to-shoulder taping.
155 - 160 g/m² approx.
100% Preshrunk cotton
GM - 85% Cotton / 15% Viscose



XS	48/68
S	51/70
M	53/72
L	56/74
XL	58/76
XXL	61/78
3XL	66/82

WH
GM
BK
SY
WR
RD
RB
NY
KH
CH



REGULAR HIT LS T-SHIRT

REF: TSRA170LS

Long sleeve T-shirt with cuffs. Tubular fit.
Double needle stitching in collar, sleeves and bottom hem for extra durability.
Ribbed collar with elastane. Shoulder-to-shoulder taping.
170 g/m² approx.
100% Preshrunk cotton
GM - 85% Cotton / 15% Viscose



XS	48/68
S	51/70
M	53/72
L	56/74
XL	58/76
XXL	61/78
3XL	66/82

WH
GM
BK
RD
RB
NY



LADY REGULAR LS COMFORT

REF: TSRLCMFLS

Double needle stitching in collar, sleeves and bottom hem for extra durability. 1x1 rib on collar.
155 g/m² approx.
100% Preshrunk cotton
GM - 85% Cotton / 15% Viscose



PAG. 53
REF: TSRK150LS



S	42/60
M	44/62
L	46/64
XL	48/66
XXL	50/68

WH
GM
BK
RD
RB
NY
KH



NEW

LADY REGULAR LS PREMIUM

REF: TSRLPRMLS

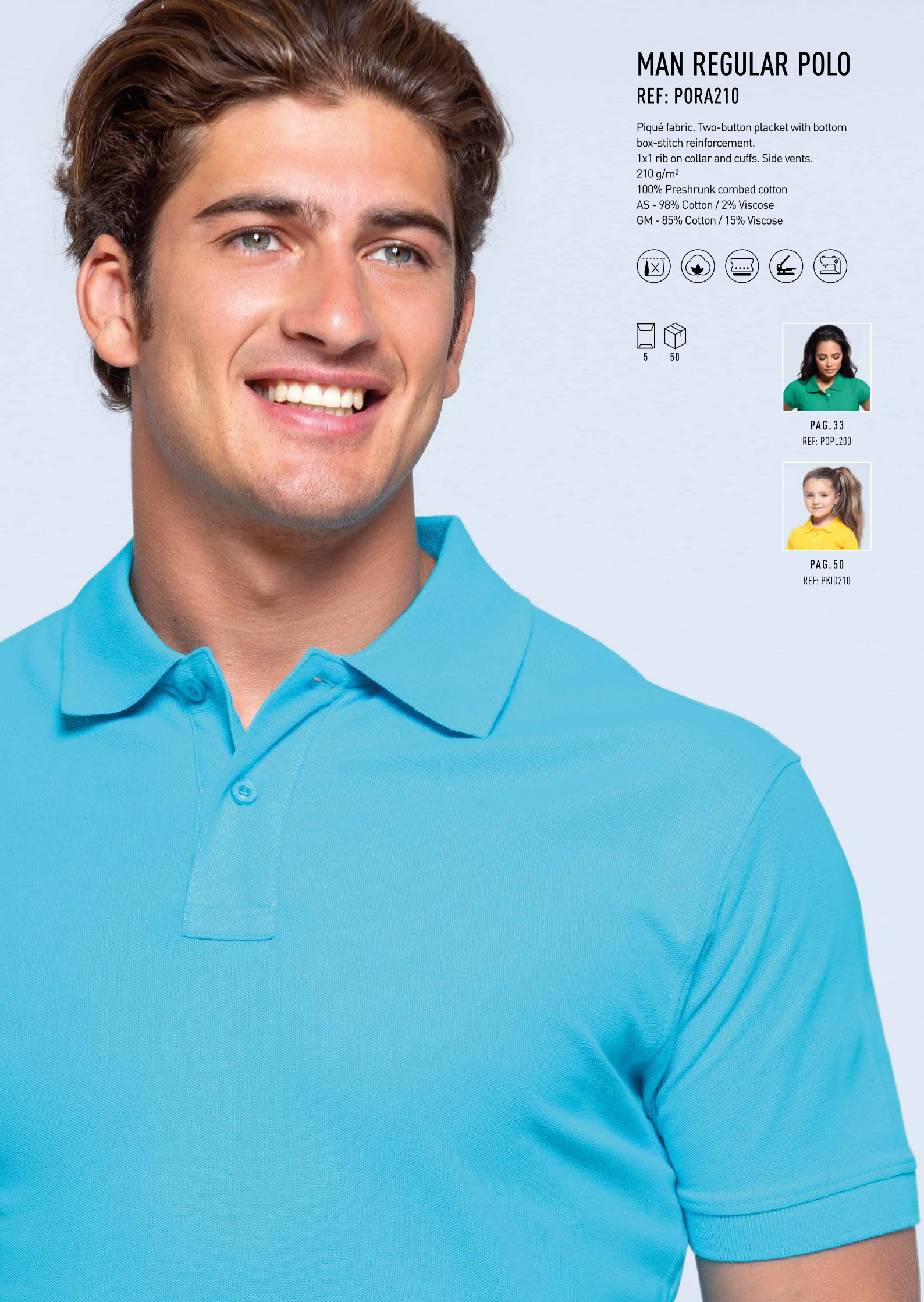
Long sleeve T-shirt with cuffs. Tubular fit. 1x1 ribbed collar with elastane.
Double needle stitching in collar, sleeves and bottom hem for extra durability. Shoulder-to-shoulder taping.
170 g/m² approx.
100% Preshrunk cotton
GM - 85% Cotton / 15% Viscose



S	42/60
M	44/62
L	46/64
XL	48/66
XXL	50/68

WH
GM
BK
RD
RB
NY





MAN REGULAR POLO
REF: PORA210

Piqué fabric. Two-button placket with bottom box-stitch reinforcement.
1x1 rib on collar and cuffs. Side vents.
210 g/m²
100% Preshrunk combed cotton
AS - 98% Cotton / 2% Viscose
GM - 85% Cotton / 15% Viscose



PAG.33
REF: POPL200



PAG.50
REF: PKID210

WH
AS
GM
ZC
GF
BK
LY
SY
MU
PH
CO
OR
WR
RD
BU
FU
PK
LV
PU
SK
TU
AQM
AZ
RB
NY
PG
MG
KG
LM
BG
FG
KH
SA
CH

KING SIZE										REF: PORA210KS		5	25
	XS	S	M	L	XL	XXL	3XL	4XL	5XL	WH	GM	BK	RD
	47/68	51/70	53/72	55/74	59/76	63/82	65/84	67/86	71/88	RB	NY		



	XS	47/68
	S	51/70
	M	53/72
	L	55/74
	XL	59/76
	XXL	63/82
	3XL	65/84

	WH	NY
N	WH	KG
N	WH	RD
N	WH	BK
	BK	WH
	NY	WH
	RD	WH
	RB	WH
N	BG	WH
N	BU	WH
N	GM	WH





LADY REGULAR POLO

REF: POPL200

Piqué fabric. Slightly fitted. Three-button placket with bottom box-stitch reinforcement.
1x1 rib on collar and cuffs. Side vents.
200 g/m²
100% Preshrunk combed cotton
AS - 98% Cotton / 2% Viscose
GM - 85% Cotton / 15% Viscose



WH	PK
AS	LV
GM	PU
GF	SK
BK	TU
LY	RB
SY	NY
MU	MG
OR	KG
RD	LM
BU	BG
RP	KH
FU	SA
AL	CH

Colors in size 3XL*

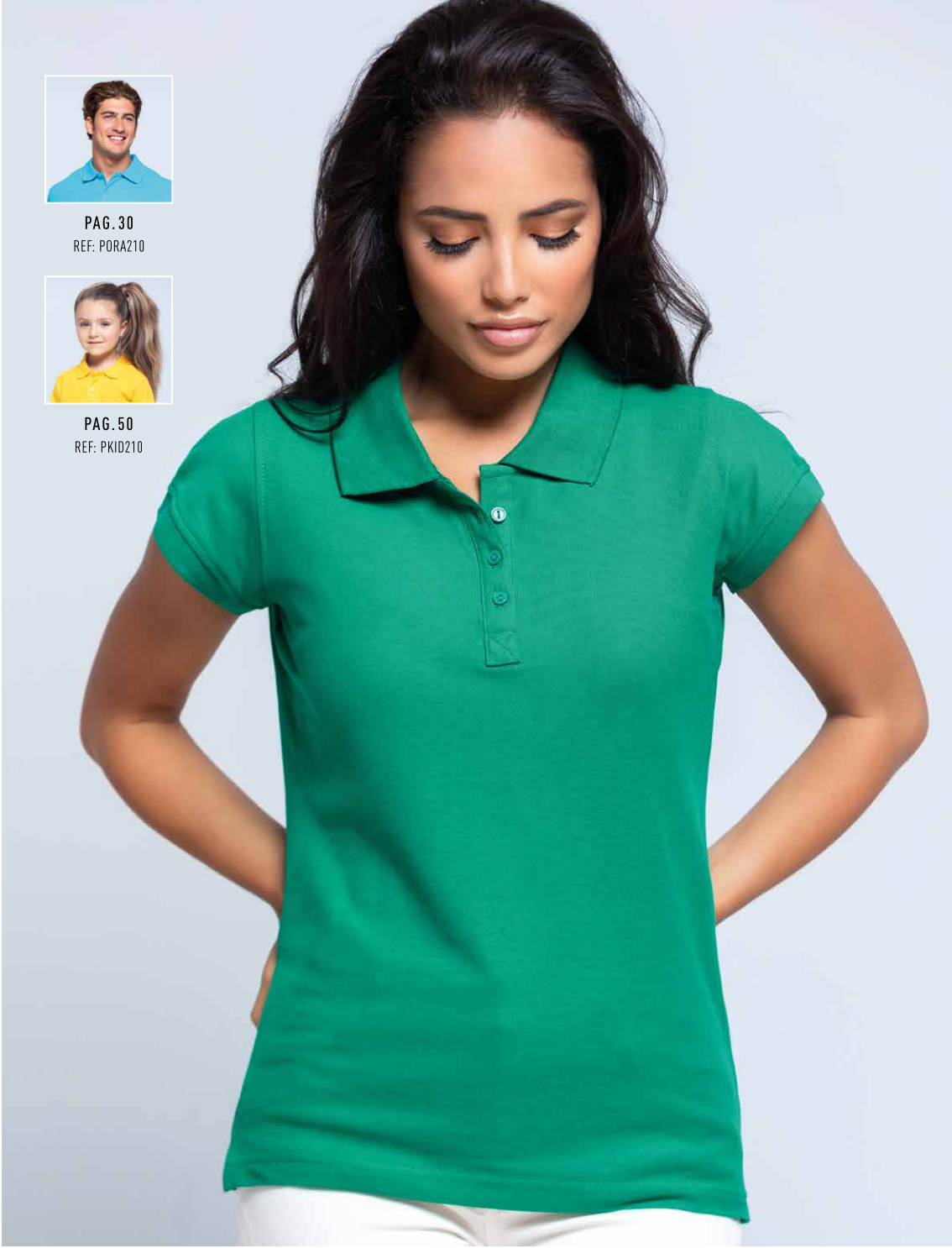
WH
GM
BK
RD
RB
NY



PAG. 30
REF: PORA210



PAG. 50
REF: PKID210



S	M	L	XL	XXL	3XL*
42/61	44/63	46/65	48/67	50/69	54/73

SIZES
for ladies



REF: CURVSPOLO

PAG. 57

S	M	L	XL
56/73	58/73	60/75	62/75

WH
BK
RD
FU
RB
NY
LM



N





WORKER 210 POLO

REF: PORA210WK

Piqué fabric. Two-button placket with bottom box-stitch reinforcement. 1x1 rib on collar and cuffs. Side vents. 210 g/m² approx. 65% Polyester / 35% Cotton GM - 85% Cotton / 15% Viscose



S	M	L	XL	XXL	3XL	4XL*	5XL*
52/70	54/72	56/74	60/76	64/82	68/88	72/92	76/96

WH
GM
BK
RD
BU
SK
RB
NY
KG
BG



REF: PORAWKKS



WH
BK
RB
NY



PAG.50
REF: PKID210SCH



LADY WORKER POLO

REF: POPL200WK

Piqué fabric. Three-button placket with bottom box-stitch reinforcement. 1x1 rib on collar and cuffs. Side vents. 200 g/m² approx. 65% Polyester / 35% Cotton GM - 85% Cotton / 15% Viscose



S	M	L	XL	XXL	3XL
42/61	44/63	46/65	48/67	50/69	54/73

WH
GM
BK
RD
BU
SK
RB
NY
KG
BG

MAN REGULAR LS POLO

REF: PORA210LS

Piqué fabric. Two-button placket with bottom box-stitch reinforcement. Side vents. Longer back panel.
211 g/m²
100% Preshrunk combed cotton
GM - 85% Cotton / 15% Viscose



PAG. 52
REF: PKID210LS

- WH
- GM
- GF
- BK
- OR
- WR
- RD
- BU
- SK
- RB
- NY
- KG
- N

BG
- KH
- SA
- CH

KING SIZE

REF: PORA210LKS



XS*	S	M	L	XL	XXL	3XL*	4XL*	5XL*
48/68	52/70	54/72	56/74	60/76	64/82	66/84	68/84	72/88

WH	GM	BK	RD
RB	NY		

LADY REGULAR LS POLO

REF: POPL200LS

Piqué fabric. Three-button placket with bottom box-stitch reinforcement. Side vents. Slightly fitted.
200 g/m²
100% Preshrunk combed cotton
GM - 85% Cotton / 15% Viscose



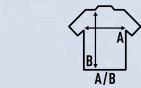
XS	40/59
S	42/61
M	44/63
L	46/65
XL	48/67
XXL	50/69
3XL	54/73

- WH
- GM
- GF
- BK
- OR
- RD
- BU
- TU
- RB
- NY

BABY BODY

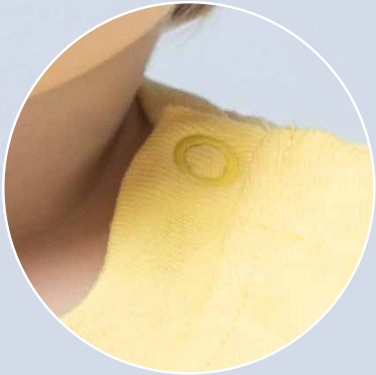
REF: TSRBBODY

Snap fasteners in shoulder
and bottom hem. 1x1 rib on collar.
170 g/m²
100% Cotton
GM - 85% Cotton / 15% Viscose



3M	20/38
6M	22/40
9M	24/42
12M	26/44
N 18M	28/46

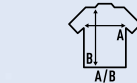
WH
GM
BK
LY
OR
RD
AL
PK
SK
RB
NY



SINGLE JERSEY BABY BODY

REF: TSRBODY150

Snap fasteners in shoulder and bottom hem. Single jersey. 145 g/m² 100% Cotton GM - 85% Cotton / 15% Viscose



3M	20/38
6M	22/40
9M	24/42
12M	26/44
18M	28/46

WH
GM
BK
LY
OR
RD
AL
PK
SK
RB
NY



NEW

BABY PLAYSUIT

REF: TSRBSUIT

Snap fasteners in shoulder and bottom hem. 1x1 rib on collar. 170 g/m² 100% Cotton GM - 85% Cotton / 15% Viscose



3M	23/41
6M	24/44
9M	25/46
12M	26/48
N 18M	28/50



WH
GM
BK
PK
SK

LS BABY BODY

REF: TSRBBODYLS

Snap fasteners in shoulder and bottom hem. 1x1 rib on collar. 170 g/m² 100% Cotton GM - 85% Cotton / 15% Viscose



3M	20/38
6M	22/40
9M	24/42
12M	26/44
N 18M	28/46

WH
GM
BK
PK
SK





BABY T-SHIRT
REF: TSRB150

1x1 rib on collar.
2 shoulder buttons in size 0.
Side-seamed.
Shoulder-to-shoulder taping.
155 g/m²
100% Preshrunk cotton
GM - 85% Cotton / 15% Viscose



0	23/34
1	25/35
2	30/37

WH
GM
BK
LY
SY
OR
RD
FU
AL
PK
PU
SK
TU
RB
NY
LM
PT



KID T-SHIRT
REF: TSRK150

Ribbed collar with elastane.
Side-seamed. Double needle stitching in collar, sleeves and bottom hem for extra durability. Shoulder-to-shoulder taping. 155 g/m² approx.
100% Preshrunk cotton
AS - 98% Cotton / 2% Viscose
GM - 85% Cotton / 15% Viscose



3/4	32/44
5/6	35/49
7/8	38/52
9/11	41/58
12/14	43/61



WH
AS
GM
GF
BK
LY
SY
MU
PH
OR
BC
WR
RD
BU
FU
AL
PK
PU
SK
TU
AZ
RB
DN
NY
IB
MG
KG
LM
PT
BG
FG
KH
AR
LS
SA
BR
CH

WLT

REF: TSRK150WLT

T-Shirt 3 cm longer,
prepared for dyeing.



PAG. 14
REF: TSRA150



PAG. 18
REF: TSRLCMF

KID PREMIUM T-SHIRT

REF: TSRK190

Ribbed collar with elastane.
Side-seamed. Double needle stitching in collar, sleeves and bottom hem for extra durability.
Shoulder-to-shoulder taping.
190 g/m² approx.
100% Preshrunk cotton
AS - 98% Cotton / 2% Viscose
GM - 85% Cotton / 15% Viscose



PAG. 27

REF: TSRA190

3/4	32/44	33/45
5/6	35/49	36/51
7/8	38/52	39/54
9/11	41/58	42/60
12/14	43/61	45/64

WH
AS
GM
GF
BK
SY
OR
RD
PK
SK
TU
RB
NY

PREPARED FOR DYEING
PFD



KID TONGA

REF: TSLKTNG

Single jersey. Slightly fitted.
1x1 rib on collar.
155 g/m² approx.
100% Cotton
GM - 85% Cotton / 15% Viscose



3/4	30/42
5/6	32/45
7/8	34/48
9/11	36/51
12/14	38/54

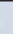
WH
GM
BK
LY
OR
RD
FU
PK
SK
RB
NY
MG
LM



KID STRAP
REF: TSRKSTRAP

Double needle stitching in collar,
sleeves and bottom hem for extra
durability. Self-fabric collar.
155 g/m² approx.
100% Preshrunk cotton
GM - 85% Cotton / 15% Viscose



	
3/4	32/44
5/6	35/49
7/8	38/52
9/11	41/58
12/14	43/61

WH
GM
BK
RD
RB
NY



PAG. 115
REF: TSUASTRPM

KID TUVALU
REF: TSLKTVL

Tank top. 1x1 rib on collar.
2X1 rib back pleat.
170 g/m² approx.
100% Cotton



3/4	26/42
5/6	28/44
7/8	30/47
9/11	32/50
12/14	34/56

WH
BK
LY
SY
OR
RD
FU
AL
PK
SK
AQ
NY
LM



KID POLO

REF: PKID210

Piqué fabric. Two-button placket with bottom box-stitch reinforcement. 1x1 rib on collar and cuffs. Side vents. 210 g/m² approx. 100% Preshrunk combed cotton GM - 85% Cotton / 15% Viscose



1/2*	30/39
3/4	33/42
5/6	37/46
7/8	39/51
9/11	42/57
12/14	44/64



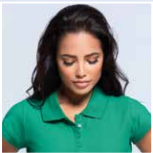
WH
GM
BK
LY
SY
PH
OR
RD
BU
FU
PK
SK
RB
NY
KG
LM
FG

Colors in size 1/2*

WH
BK
OR
RD
FU
SK
RB
NY
KG
LM



PAG. 30
REF: PORAZ10



PAG. 33
REF: POPL200

SCHOOL WEAR KID POLO

REF: PKID210SCH

Piqué fabric. Two-button placket with bottom box-stitch reinforcement. 1x1 rib on collar and cuffs. Side vents. 210 g/m² approx. 65% Polyester / 35% Cotton



PAG. 34
REF: PORAZ10WK
REF: POPL200WK



1/2	30/39
3/4	33/42
5/6	37/46
7/8	39/51
9/11	42/57
12/14	44/64

WH
BU
SK
RB
NY
BG



NEW

Contrast

WH	NY
NY	WH
RD	WH
RB	WH
BG	WH
BU	WH

KID LS POLO

REF: PKID210LS

Piqué fabric. Two-button placket with bottom box-stitch reinforcement. 1x1 rib on collar. Side vents. 210 g/m² approx. 100% Preshrunk combed cotton



PAG. 36
REF: PORAZ10LS



PAG. 37
REF: POPLZ00LS



1/2	30/39
3/4	33/42
5/6	37/46
7/8	39/51
9/11	42/57
12/14	44/64

WH
GF
BK
RD
BU
SK
RB
NY
FG



KID LS T-SHIRT

REF: TSRK150LS

Ribbed collar with elastane. Side-seamed. Double needle stitching in collar, sleeves and bottom hem for extra durability. Shoulder-to-shoulder taping. 155 - 160 g/m² approx. 100% Preshrunk cotton GM - 85% Cotton / 15% Viscose



PAG. 28
REF: TSRA150LS



PAG. 28
REF: TSRLCMFLS



1/2*	29/39
3/4	32/44
5/6	35/49
7/8	38/52
9/11	41/58
12/14	43/61



WH
GM
GF
BK
SY
OR
RD
PK
SK
RB
NY
KG

Colors in size 1/2*

WH
BK
RD
RB
NY





CURVES & PLUS LINE



CURVES V-NECK

REF: CURVSPICO

Slightly fitted. Double needle stitching in collar, sleeves and bottom hem for extra durability.
1x1 ribbed V-neck collar.
155 g/m²
100% Cotton
GM - 85% Cotton / 15% Viscose



S	53/70
M	56/73
L	59/74
XL	62/76

WH
GM
BK
RD
FU
TU
RB
NY
LM



CURVES POLO

REF: CURVSPOLO

Piqué fabric. Three-button placket with bottom box-stitch reinforcement.
1x1 rib on collar and cuffs.
Side vents.
200 g/m²
100% Preshrunk combed cotton



S	56/73
M	58/73
L	60/75
XL	62/75

WH
BK
RD
FU
RB
NY
LM



LADY CURVES T-SHIRT

REF: CURVS150

Slightly fitted. Double needle stitching in collar, sleeves and bottom hem for extra durability.
1x1 rib on collar.
155 g/m²
100% Cotton
GM - 85% Cotton / 15% Viscose



S	53/70
M	56/73
L	59/74
XL	62/76

WH
GM
BK
RD
FU
TU
RB
NY
LM



CURVES SLUB

REF: CURVSSLUB

Slub fabric. Bell shaped.
1x1 ribbed V-neck collar.
Unfinished sleeve and bottom.
120 g/m²
100% Cotton



S	47/68
M	52/69
L	56/72
XL	60/74

WH
BK





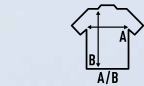
**S U B L I
L I N E**



MAN SUBLI T-SHIRT

REF: SBTSMAN

Double needle stitching in collar,
sleeves and bottom hem for extra durability.
150 g/m²
100% Polyester



XS	46/66
S	48/68
M	51/70
L	53/72
XL	56/74
XXL	58/76
3XL	61/78

WHSB
SUBLIMATABLE



LADY COMFORT SUBLI

REF: SBTSLCMF

Double needle stitching in collar,
sleeves and bottom hem for extra durability.
150 g/m²
100% Polyester



S	42/60
M	44/62
L	46/64
XL	48/66
XXL	50/68
3XL	52/70

WHSB
SUBLIMATABLE



KID SUBLI T-SHIRT

REF: SBTSKID

Double needle stitching in collar,
sleeves and bottom hem for extra durability.
150 g/m²
100% Polyester



3/4	32/44
5/6	35/49
7/8	38/52
9/11	41/58
12/14	43/61

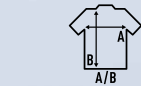
WHSB
SUBLIMATABLE



LADY COMFORT
V-NECK SUBLI

REF: SBTSLCMFP

Double needle stitching in collar,
sleeves and bottom hem for extra durability.
150 g/m²
100% Polyester



S	42/60
M	44/62
L	46/64
XL	48/66
XXL	50/68
3XL	52/70

WHSB
SUBLIMATABLE



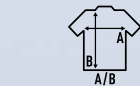
BURN OUT SUBLI

REF: SBTSLBOT

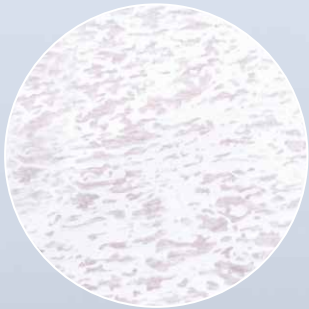
Cotton burn. Double needle stitching in collar,
sleeves and bottom hem for extra durability.
Unfinished collar.
120 - 125 g/m² approx.
60% Cotton / 40% Polyester



WHSB
SUBLIMATABLE



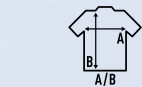
S	48/66
M	50/68
L	52/70
XL	54/72



FLOWY SUBLI

REF: SBTSLFW

Oversized fashion fit. V-neck.
Single jersey.
150 g/m²
100% Polyester



S/M	64/66
L/XL	67/68



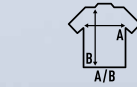
WHSB
SUBLIMATABLE



V-NECK SUBLI TOP

REF: SBTSLPICO

Tank top. V-neck.
Single jersey.
Slightly fitted.
150 g/m²
100% Polyester



S	40/63
M	42/65
L	44/67
XL	46/69
XXL	48/71

WHSB
SUBLIMATABLE



SUBLI SWEATSHIRT

REF: SWOCEKNG / SWOCECR
SWRA290 / SWRAKNG
SWULKNG / SWRAFUZIP
SWRAZIP / SWUAHOOD
SWRK290 / SWRKKNG

Sublimation blank hoodies.
260 g/m² / 290 g/m²
65% Polyester / 35% Cotton



WH



SUBLI DRESS

REF: SBLDRESS

Scoop neck dress. Single jersey.
Raglan sleeves. Slightly fitted.
Unfinished sleeve and bottom.
150 g/m²
100% Polyester



S/M	43/82
L/XL	45/85
XXL	47/87

WHSB
SUBLIMATABLE





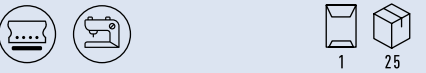
**CASUAL &
BUSINESS LINE**



CASUAL & BUSINESS SHIRT

REF: SHAOXF / REF: SHAPOP

Long sleeve shirt. Button-down collar.
Left chest pocket. Dyed-to-match button.
Oxford - 60% Cotton / 40% Polyester
Poplin - 65% Polyester / 35% Cotton



OXFORD		POPLIN	
WH		WH	
SK		GY	
SL	*SL: Silver	BK	
RB		SK	
PK	*Old Style	RB	
		NY	

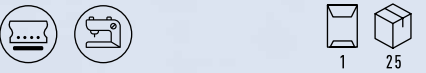
Collar size	38	39	42	43	46	48	50
	S	M	L	XL	XXL	3XL	4XL
	53/79	56/80	58/81	63/82	68/83	73/84	78/85



CASUAL & BUSINESS SS SHIRT

REF: SHAOXFSS / REF: SHAPOPSS

Short sleeve shirt. Button-down collar.
Left chest pocket. Dyed-to-match button.
Oxford - 60% Cotton / 40% Polyester
Poplin - 65% Polyester / 35% Cotton



OXFORD		POPLIN	
WH		WH	
SK		GY	
SL	*SL: Silver	BK	
RB		SK	
		RB	
		NY	

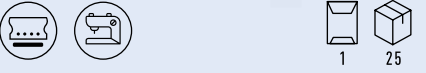
Collar size	38	39	42	43	46	48	50
	S	M	L	XL	XXL	3XL	4XL
	53/79	56/80	58/81	63/82	68/83	73/84	78/85



LADY CASUAL & BUSINESS SHIRT

REF: SHLOXF / REF: SHLPOP

Long sleeve shirt. Slightly fitted.
Dyed-to-match button.
Oxford - 60% Cotton / 40% Polyester
Poplin - 65% Polyester / 35% Cotton



OXFORD		POPLIN	
WH		WH	
SK		GY	
SL	*SL: Silver	BK	
RB		SK	
PK	*Old Style	RB	
		NY	

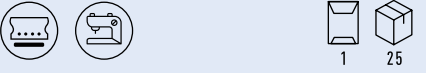
Collar size	34	36	37	38	39	41	42
	XS	S	M	L	XL	XXL	3XL
	46/63	49/65	52/67	54/68	58/69	62/70	66/71



LADY CASUAL & BUSINESS SS SHIRT

REF: SHLOXFSS / REF: SHLPOPSS

Short sleeve shirt. Slightly fitted.
Dyed-to-match button.
Oxford - 60% Cotton / 40% Polyester
Poplin - 65% Polyester / 35% Cotton



OXFORD		POPLIN	
WH		WH	
SK		GY	
SL	*SL: Silver	BK	
RB		SK	
		RB	
		NY	

Collar size	34	36	37	38	39	41	42
	XS	S	M	L	XL	XXL	3XL
	46/63	49/65	52/67	54/68	58/69	62/70	66/71



CASUAL & BUSINESS
MILAN

REF: SHAMILAN

Fil a Fil shirt (a type of fabric by the alternation of two colours of yarn). Semi cutaway collar.
No chest pocket. Easy iron.
65% Polyester / 35% Cotton yarn-dyed



SK

Collar size	37	38	39	42	43	46	48
	XS	S	M	L	XL	XXL	3XL
	51/79	53/79	56/80	58/81	63/82	68/83	73/84

CASUAL & BUSINESS
BERLIN

REF: SHABERLIN

Blue stripe shirt.
Semi cutaway collar.
No chest pocket. Easy iron.
65% Polyester / 35% Cotton yarn-dyed



SK

Collar size	37	38	39	42	43	46	48
	XS	S	M	L	XL	XXL	3XL
	51/79	53/79	56/80	58/81	63/82	68/83	73/84



CASUAL & BUSINESS
MONACO

REF: SHAMONACO

Denim shirt.
Semi cutaway collar.
No chest pocket. Easy iron.
65% Polyester / 35% Cotton yarn-dyed



DN

Collar size	37	38	39	42	43	46	48
	XS	S	M	L	XL	XXL	3XL
	51/79	53/79	56/80	58/81	63/82	68/83	73/84

CASUAL & BUSINESS
LONDON

REF: SHALONDON

Check shirt.
Semi cutaway collar.
No chest pocket. Easy iron.
65% Polyester / 35% Cotton yarn-dyed



SK

Collar size	37	38	39	42	43	46	48
	XS	S	M	L	XL	XXL	3XL
	51/79	53/79	56/80	58/81	63/82	68/83	73/84





W I N T E R L I N E







UNISEX SWEATSHIRT

REF: SWRA290

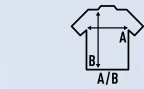
Double needle collar, cuffs and waistband for extra durability. Cuffs and bottom hem in 1x1 rib with elastane. 290 g/m² approx. 65% Polyester / 35% Cotton



	
WH	
AS	
GM	
GF	
N CHC	
BK	
SY	
OR	
RD	
BU	
RP	
PK	
PU	
SK	
AQ	
RB	
NY	
KG	
AP	
BG	
FG	
KH	

Colors in size 3XL*

GM	
BK	
RB	
NY	
KG	



XS	51/63
S	54/66
M	57/69
L	60/72
XL	63/76
XXL	66/78
3XL*	70/81



KID SWEATSHIRT

REF: SWRK290

Double needle collar, cuffs and waistband for extra durability. Bottom hem, cuffs and collar with 1x1 elastane rib. 290 g/m² approx. 65% Polyester / 35% Cotton



1/2	33/40
3/4	36/43
5/6	39/46
7/8	42/53
9/11	46/58
12/14	50/61

WH	
AS	
GM	
BK	
PH	
RD	
PK	
PU	
SK	
RB	
NY	
KG	
BG	



KANGAROO SWEATSHIRT

REF: SWRAKNG

Hooded sweatshirt. Dyed-to-match drawcord.
Pouch pocket for extra carry.
Cuffs and bottom hem in 1x1 rib with elastane.
290 g/m² approx.
65% Polyester / 35% Cotton



XS	52/68
S	54/69
M	56/70
L	58/71
XL	60/72
XXL	62/74
3XL*	64/76

WH	
AS	
GM	
N CHC	
BK	
SY	
OR	
RD	
BU	
PU	
SK	
RB	
DN	
NY	
KG	
N AP	
BG	

Colors in size 3XL*

GM	
BK	
RD	
RB	
NY	
KG	



LADY KANGAROO

SWEATSHIRT

REF: SWULKNG

Hooded sweatshirt. Dyed-to-match drawcord.
Pouch pocket for extra carry.
Cuffs and bottom hem in 1x1 rib with elastane.
290 g/m² approx.
65% Polyester / 35% Cotton



S	48/68
M	50/70
L	52/72
XL	54/74
XXL	56/76

WH	
AS	
GM	
BK	
SY	
OR	
RD	
PK	
PU	
SK	
RB	
NY	
KG	

Colors in size 1/2*

BK	
RD	
NY	



	WH
	AS
	GM
N	CHC
	BK
	SY
	OR
	RD
	BU
	RP
	PK
	PU
	SK
	RB
	DN
	NY
	KG
N	AP
	BG

KID KANGAROO

SWEATSHIRT

REF: SWRKNG

Hooded sweatshirt. Pouch pocket
for extra carry. Cuffs and bottom hem
in 1x1 rib with elastane.
290 g/m² approx.
65% Polyester / 35% Cotton



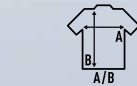
1/2*	33/40
3/4	36/43
5/6	39/46
7/8	42/53
9/11	46/58
12/14	50/61



HALF ZIP SWEATSHIRT

REF: SWRAZIP

Cuffs and bottom hem in 1x1 rib with elastane.
290 g/m² approx.
65% Polyester / 35% Cotton



S	54/66
M	57/69
L	60/72
XL	63/76
XXL	66/78

WH
AS
BK
OR
RD
RB
NY
KH



HOODED SWEATSHIRT

REF: SWUAHOOD

Hooded sweatshirt. Dyed-to-match drawcord.
Kissing zipper. Pouch pocket for extra carry.
Cuffs and bottom hem in 1x1 rib with elastane.
290 g/m² approx.
65% Polyester / 35% Cotton



XS	52/67
S	54/69
M	56/70
L	58/71
XL	60/72
XXL	62/74



PAG. 82
REF: SWRKHOOD



PAG. 93
REF: SWULHOOD



FULL ZIP SWEATSHIRT

REF: SWRAFUZIP

Cuffs and bottom hem in 1x1 rib with elastane.
Kissing zipper. Hand pockets.
290 g/m² approx.
65% Polyester / 35% Cotton



XS	52/67
S	54/69
M	56/72
L	58/74
XL	60/76
XXL	62/78

WH
GM
CHC
BK
RD
CA
RB
DN
NY
BG
KH



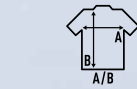
PAG. 82
REF: SWRKFUZIP



WH
GM
BK
MU
RD
RB
NY
KG
BG
KH

KID HOODED SWEATSHIRT
REF: SWRKHOOD

Hooded sweatshirt. Kissing zipper.
Pouch pocket for extra carry.
Cuffs and bottom hem in 1x1 rib with elastane.
290 g/m² approx.
65% Polyester / 35% Cotton



1/2	33/40
3/4	36/43
5/6	39/46
7/8	42/53
9/11	46/58
12/14	50/61

WH
AS
N BK
RD
PK
RB
NY



PAG. 81
REF: SWUAHOOD



PAG. 93
REF: SWULHOOD

KID FULL ZIP
SWEATSHIRT
REF: SWRKFUZIP

Kissing zipper. Hand pockets.
Cuffs and bottom hem in 1x1 rib with elastane.
290 g/m² approx.
65% Polyester / 35% Cotton



1/2	33/40
3/4	36/43
5/6	39/46
7/8	42/53
9/11	46/58
12/14	50/61

WH
AS
N BK
RD
BU
RB
NY
BG



PAG. 80
REF: SWRAFUZIP



NEW

80%
Cotton
20%
Polyester

CVC
SWEATSHIRTS

- PERFECT RESULT FOR TRANSFER AND DIGITAL PRINTING.
- IT LEAVES NO TRACE.
- HIGH RESISTANCE TO PILLING.

CVC SWEATSHIRT

REF: SWCR275

Double needle stitching in collar, sleeves and bottom hem for extra durability. Bottom hem, cuffs and collar with 1x1 elastane rib. 275 g/m² approx. 80% Cotton / 20% Polyester



WH
GM
BK
RD
RB
NY



XS	51/63
S	54/66
M	57/69
L	60/72
XL	63/76
XXL	66/78
3XL	70/81



LADY CVC SWEATSHIRT

REF: SWRL275

Double needle stitching in collar, sleeves and bottom hem for extra durability. Bottom hem, cuffs and collar with 1x1 elastane rib. 275 g/m² approx. 80% Cotton / 20% Polyester



S	48/65
M	50/67
L	52/69
XL	54/71
XXL	56/73

WH
GM
BK
RD
PK
RB
NY



KID CVC SWEATSHIRT

REF: SWRK275

Double needle collar, cuffs and waistband for extra durability. Bottom hem, cuffs and collar with 1x1 elastane rib. 275 g/m² approx. 80% Cotton / 20% Polyester



1/2	33/40
3/4	36/43
5/6	39/46
7/8	42/53
9/11	46/58
12/14	50/61

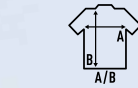
WH
GM
BK
RD
RB
NY



KANGAROO CVC SWEATSHIRT

REF: SWKNG275

Hooded sweatshirt. Dyed-to-match drawcord.
Pouch pocket for extra carry.
Cuffs and bottom hem in 1x1 rib with elastane.
275 g/m² approx.
80% Cotton / 20% Polyester



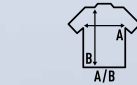
XS	52/68
S	54/69
M	56/70
L	58/71
XL	60/72
XXL	62/74
3XL	64/76

WH
GM
BK
RD
RB
NY

LADY KANGAROO CVC SWEATSHIRT

REF: SWULKNG275

Hooded sweatshirt. Dyed-to-match drawcord.
Pouch pocket for extra carry.
Cuffs and bottom hem in 1x1 rib with elastane.
275 g/m² approx.
80% Cotton / 20% Polyester



S	48/66
M	50/68
L	52/70
XL	54/72
XXL	56/74

WH
GM
BK
RD
PK
RB
NY



KID KANGAROO CVC

REF: SWRKNG275

Hooded sweatshirt. Pouch pocket
for extra carry. Cuffs and bottom hem
in 1x1 rib with elastane.
275 g/m² approx.
80% Cotton / 20% Polyester



1/2	33/40
3/4	36/43
5/6	39/46
7/8	42/53
9/11	46/58
12/14	50/61

WH
GM
BK
RD
RB
NY

HOODED CVC SWEATSHIRT

REF: SWHOOD275

Hooded sweatshirt. Dyed-to-match drawcord.
Kissing zipper. Pouch pocket for extra carry.
Cuffs and bottom hem in 1x1 rib with elastane.
275 g/m² approx.
80% Cotton / 20% Polyester



XS	52/67
S	54/69
M	56/70
L	58/71
XL	60/72
XXL	62/74

WH
GM
BK
RD
RB
NY



FULL ZIP CVC SWEATSHIRT

REF: SWFUZIP275

Cuffs and bottom hem in 1x1 rib with elastane.
Kissing zipper. Hand pockets.
275 g/m² approx.
80% Cotton / 20% Polyester



XS	52/67
S	54/69
M	56/72
L	58/74
XL	60/76
XXL	62/78

WH
GM
BK
RD
RB
NY

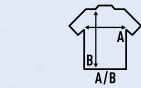


French Terry

SWEATSHIRTS

PEACH CREW NECK
REF: SWCRPEACH

Double needle collar, cuffs and waistband for extra durability. Collar, cuffs and bottom hem in 2x1 rib with elastane. French Terry fabric. 260 g/m² approx. 60% Cotton / 40% Polyester



S	54/66
M	57/69
L	60/72
XL	63/76
XXL	66/78

CHC
MU
BU
DN

Peach

PEACH KANGAROO
REF: SWKNGPEACH

Hooded sweatshirt. Dyed-to-match drawcord. Pouch pocket for extra carry. Cuffs and bottom hem in 2x1 rib with elastane. French Terry fabric. 260 g/m² approx. 60% Cotton / 40% Polyester



Peach

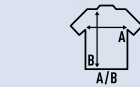
S	54/69
M	56/70
L	58/71
XL	60/72
XXL	62/74

CHC
MU
BU
DN

LADY CREW NECK SWEATSHIRT

REF: SWULCR

Double needle collar, cuffs and waistband for extra durability. Collar, cuffs and bottom hem in 2x1 rib with elastane. French Terry fabric. 260 g/m² approx. 65% Polyester / 35% Cotton



S	47/68
M	49/70
L	51/72
XL	53/74
XXL	55/76

WH
GM
BK
PK
NY



PAG. 81
REF: SWUAHOOD



PAG. 82
REF: SWRKHOOD



LADY FULL ZIP HOODED SWEATSHIRT

REF: SWULHOOD

Hooded sweatshirt. Dyed-to-match drawcord. Kissing zipper. Pouch pocket for extra carry. 2x1 rib cuffs and waistband. French Terry fabric. 260 g/m² approx. 65% Polyester / 35% Cotton



S	48/68
M	50/70
L	52/72
XL	54/74
XXL	56/76

WH
GM
BK
PK
NY

LS BABY PLAYSUIT

REF: SWRBSUIT

Long sleeves romper with snap fasteners in the back. Cuffs in 2x1 rib with elastane. French Terry fabric. 270 g/m² 65% Polyester / 35% Cotton



3M	22/46
6M	24/50
9M	26/54
12M	28/58
N 18M	30/62

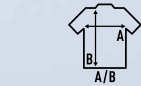
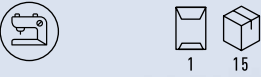
WH
GM
BK
PK
SK



MAN POLAR FLEECE

REF: FLRA300

Full zip. Hand pockets. Pill-resistant.
Hem with adjustable draw cord and stopper.
Elastic cuffs.
300 g/m² approx.
100% Polyester



XS	56/64
S	58/66
M	60/68
L	62/70
XL	64/73
XXL	66/75
3XL	68/80



WH
OFWH
GM
GF
BK
OR
RD
BU
PU
SK
AQ
RB
NY
KG
LM
BG
FG
SA

KID POLAR FLEECE

REF: FLRK300

Full zip. 2 zipped lower pockets.
Pill-resistant. Hem with adjustable
draw cord and stopper.
300 g/m² approx.
100% Polyester



1/2	37/43
3/4	40/47
5/6	43/51
7/8	46/55
9/11	49/59
12/14	52/63

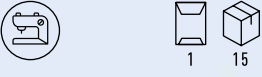
OR
RD
RP
PU
SK
RB
NY
KG
LM



LADY POLAR FLEECE

REF: FLRL300

Full zip. 2 zipped lower pockets.
Slightly fitted. Pill-resistant.
Hem with adjustable draw cord and stopper.
Elastic cuffs.
300 g/m² approx.
100% Polyester



XS	45/59
S	47/61
M	50/63
L	52/65
XL	55/67
XXL	57/69

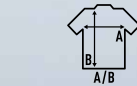
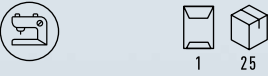
WH
OFWH
GM
BK
OR
RD
RP
BU
PU
SK
AQ
RB
NY
KG
LM
BG
FG
SA



MAN MICRO FLEECE

REF: MICFLEMAN

Quarter-zip.
Pill-resistant. Elastic cuffs.
140 g/m² approx.
100% Polyester



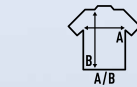
XS	49/66
S	51/68
M	53/70
L	55/73
XL	57/76
XXL	59/78

GM
BK
RD
RB
NY

MAN 330 POLAR FLEECE

REF: FLRA330

Full zip. 2 side pockets. 1 zipped chest pocket.
Pill-resistant. Hem with adjustable draw cord and stopper. Elastic cuffs.
Reinforced patches on shoulders and elbows.
330 g/m² approx.
100% Polyester



XS	56/68
S	58/70
M	60/72
L	62/76
XL	64/78
XXL	66/80
3XL	68/83
4XL	70/87

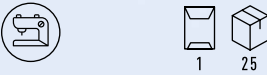
GF
BK
RD
RB
NY
BG

AVAILABLE ONLY IN CERTAIN MARKETS

LADY MICRO FLEECE

REF: MICFLELADY

Quarter-zip. Slightly fitted.
Pill-resistant. Elastic cuffs.
140 g/m² approx.
100% Polyester



XS	46/61
S	48/63
M	51/65
L	53/67
XL	55/69
XXL	58/70

GM
BK
RD
RP
RB
NY

UNISEX 330 SWEATSHIRT

REF: SWRA330

Double needle collar, cuffs and waistband for extra durability. Bottom hem, cuffs and collar with 1x1 elastane rib.
330 g/m² approx.
65% Polyester / 35% Cotton



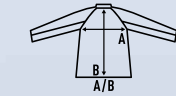
XS	51/63
S	54/66
M	57/69
L	60/72
XL	63/76
XXL	66/78
3XL	70/81

GF
BK
RD
RB
NY
BG

SOFTSHELL JACKET

REF: SOFTJACK

Full zip. 2 zipped lower pockets.
Three-layer functional material with breathable membrane. Inside made of micro fleece with adjustable shockcord hem.
300 g/m² approx.
Outer layer: 95% Polyester / 5% Elastane
Inner layer: 100% Polyester



S	53/70
M	55/72
L	57/74
XL	59/76
XXL	61/78
3XL	63/80
4XL	65/82

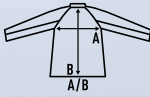
WH
GF
BK
RD
NY
BG



LADY SOFTSHELL JACKET

REF: SOFTJACKL

Full zip. Slightly fitted. 2 zipped lower pockets.
Three-layer functional material with breathable membrane. Inside made of micro fleece with adjustable shockcord hem.
300 g/m² approx.
Outer layer: 95% Polyester / 5% Elastane
Inner layer: 100% Polyester



S	47/61
M	50/63
L	52/65
XL	55/67

WH
GF
BK
RD
NY
BG



SOFTSHELL VEST

REF: SOFTVEST

Full zip. 2 zipped lower pockets.
Three-layer functional material with breathable membrane. Inside made of micro fleece with adjustable shockcord hem.
300 g/m² approx.
Outer layer: 95% Polyester / 5% Elastane
Inner layer: 100% Polyester



S	53/70
M	55/72
L	57/74
XL	59/76
XXL	61/78

WH
GF
BK
RD
NY
BG

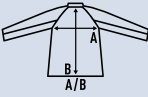


NEW

KID SOFTSHELL JACKET

REF: SOFTJACKID

Full zip. Hand pockets. Three-layer functional material with breathable membrane. Inside made of micro fleece with adjustable shockcord hem.
300 g/m² approx.
Outer layer: 95% Polyester / 5% Elastane
Inner layer: 100% Polyester



3/4	36/47
5/6	40/50
7/8	42/52
9/11	46/59
12/14	48/61

WH
GF
BK
RD
NY
BG

MAN CUFF SWEAT PANTS

REF: SWPANTSCFF

Elastic waistband with matching drawcord.
Hand pockets.
Elastic cuff at the hem.
290 g/m² approx.
65% Polyester / 35% Cotton



S	50/104
M	52/106
L	54/108
XL	56/110
XXL	57/112



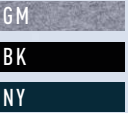
MAN SWEAT PANTS

REF: SWPANTSM

Elastic waistband with matching drawcord.
Hand pockets. Straight cut.
290 g/m² approx.
65% Polyester / 35% Cotton



S	52/106
M	54/108
L	55/110
XL	57/112
XXL	58/114



MAN SWEAT SHORTS

REF: SWSHORTSM

Elastic waistband with matching drawcord.
Front pockets with marked stitching.
One back pocket.
290 g/m² approx.
65% Polyester / 35% Cotton



S	49/45
M	51/49
L	52/54
XL	54/58



LADY SWEAT PANTS

REF: SWPANTSL

Elastic waistband with matching drawcord. Straight cut.
290 g/m² approx.
65% Polyester / 35% Cotton



S	40/99	
M	42/101	
L	44/103	
XL	46/105	
XXL	48/107	

- GM
- BK
- NY



KID SWEAT PANTS

REF: SWPANTSK

Elastic waistband with matching drawcord. Hand pockets.
Elastic cuff at the hem.
290 g/m² approx.
65% Polyester / 35% Cotton



1/2	28/40	
3/4	30/52	
5/6	33/60	
7/8	35/68	
9/11	37/75	
12/14	39/85	

- GM
- NY





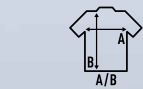
URBAN LINE





MAN URBAN SEA
REF: TSSEA

Self-fabric raw edge collar and cuffs.
Single jersey (34'S).
Enzyme wash.
120 g/m²
100% Cotton



S	52/70
M	54/72
L	56/74
XL	58/76

WH
BK
CHC
DN



LADY URBAN SEA
REF: TSLSEA

Rolled cuff. 1x1 ribbed V-neck collar.
Fashionable wide neck drop.
Single jersey (34'S). Enzyme wash.
120 g/m²
100% Cotton



S/M	48/68
L/XL	50/70

WH
BK
CHC
DN

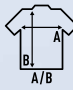


MAN URBAN SLUB

REF: TSUASLB

Slub fabric. Self-fabric raw
edge collar and cuffs.
120 g/m²
100% Cotton



	
XS	52/70
S/M	54/72
L	58/76

WH
BK

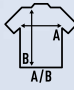


LADY URBAN SLUB

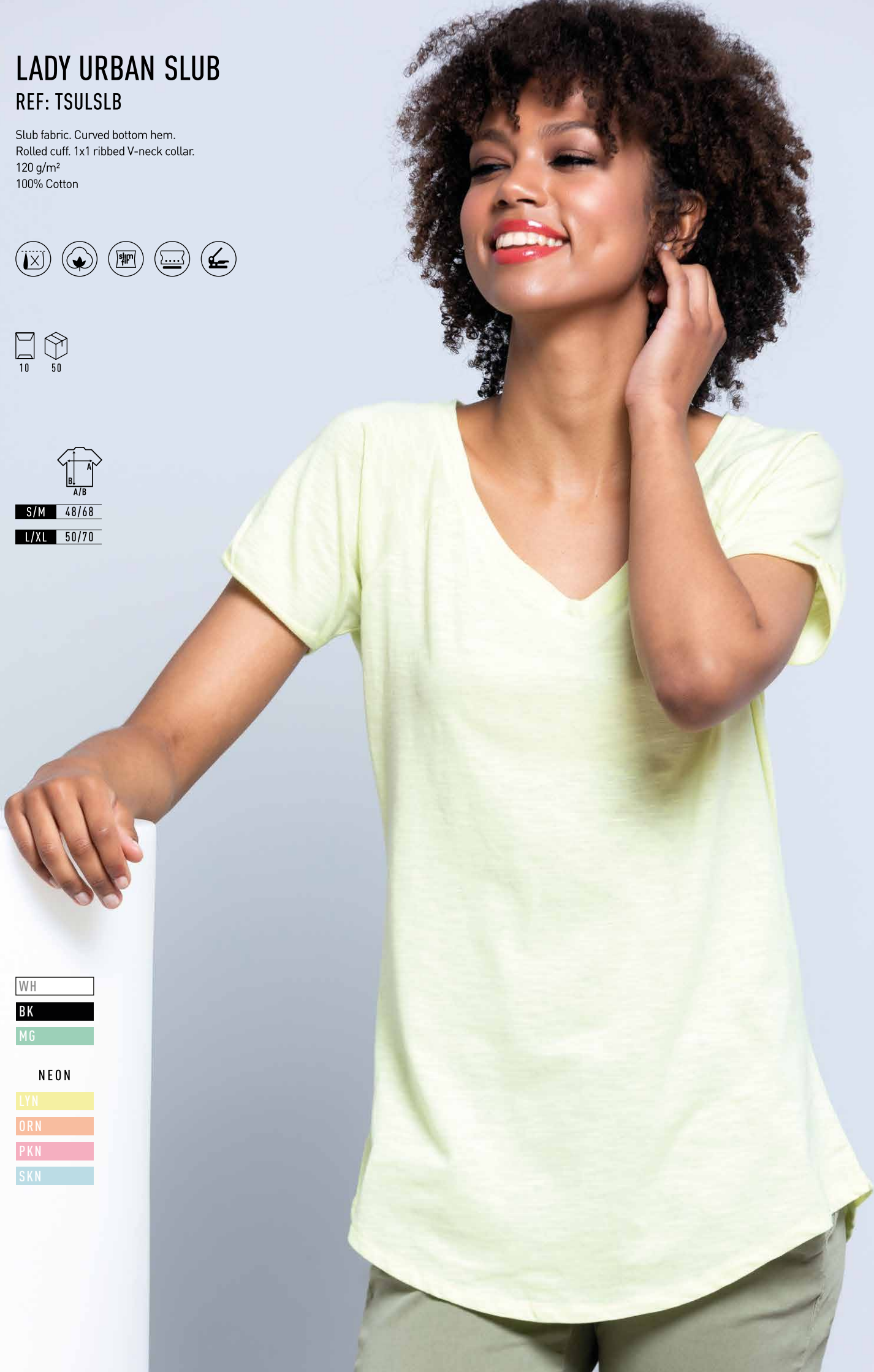
REF: TSULSLB

Slub fabric. Curved bottom hem.
Rolled cuff. 1x1 ribbed V-neck collar.
120 g/m²
100% Cotton



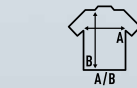
	
S/M	48/68
L/XL	50/70

WH	
BK	
MG	
NEON	
LYN	
ORN	
PKN	
SKN	



URBAN BACK TAIL
REF: TSUABACK

Side-seamed. Retail fit.
Rounded bottom hem. Drop tail.
150 g/m²
100% Cotton



S	48/76
M	52/79
L	56/81
XL	60/84
XXL	63/86

WH
BK



URBAN T-SHIRT
REF: TSUA150

Side-seamed. 1x1 rib on collar.
Shoulder-to-shoulder taping
Enzyme wash.
160 g/m² approx.
100% Preshrunk cotton
GM - 85% Cotton / 15% Viscose



S	48/71
M	51/74
L	55/76
XL	58/79
XXL	61/81



WH
GM
GF
BK
SY
RD
FU
AQ
RB
NY
KH
CH

URBAN BREAK
REF: TSUABREAK

Slub fabric. Raw edgeon sleeves.
Drop tail. Advanced side seam.
120 g/m²
100% Cotton



S	53/72
M	55/74
L	57/76
XL	59/78

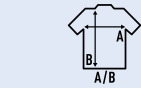
WH
BK



URBAN V-NECK

REF: TSUAPICO

Side-seamed. 1x1 rib on collar.
Shoulder-to-shoulder taping.
Enzyme wash.
160 g/m² approx.
100% Preshrunk cotton
GM - 85% Cotton / 15% Viscose
Heather - 65% Polyester / 35% Cotton
DNH - 60% Cotton / 40% Polyester



S	48/70
M	51/72
L	53/74
XL	56/76
XXL	58/80

WH
GM
BK
RD
FU
RB
NY



PAG. 20
REF: TSRLCMFP

Heather
Colours

CHCH
MUH
BUH
LVH
TUH
DNH
BGH





MAN URBAN TANK TOP

REF: TSUATNK

1x1 rib on collar. Single jersey.
Double needle stitching in collar,
sleeves and bottom hem for extra durability.
150 - 155 g/m² approx.
100% Preshrunk cotton
AS - 98% Cotton / 2% Viscose



S	48/70
M	51/72
L	53/74
XL	56/76
XXL	58/80

WH
AS
BK
RD
NY

URBAN STRAP

REF: TSUASTRPM

Tank top. Single jersey. Self-fabric collar and
armholes. Double needle stitching in collar,
sleeves and bottom hem for extra durability.
150 - 155 g/m² approx.
100% Cotton
AS - 98% Cotton / 2% Viscose
GM - 85% Cotton / 15% Viscose



PAG. 48
REF: TSRKSTRAP



S	52/66
M	54/68
L	56/70
XL	58/72
XXL	60/74

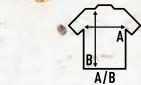
WH
AS
GM
BK
SY
CR
RB
NY



UNISEX URBAN BEACH

REF: TSUALBCH

Self-fabric collar and armholes.
Racerback. Braided low sleeve opening.
150 - 155 g/m² approx.
100% Cotton
Fluor - 100% Polyester



XS	48/70
S	50/72
M	52/74
L	54/76
XL	56/78

WH
BK
RD
RB

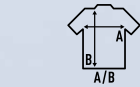
FLUOR
SYF
FUF
LMF



ARUBA

REF: TSULARB

Racerback tank top.
1x1 rib on collar. Racerback.
200 g/m²
100% Cotton carded



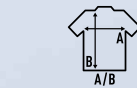
XS	36/59
S	38/61
M	40/63
L	42/65
XL	44/67

WH
BK
SY
OR
RD
FU
PU
SK
TU
RB
LM
SA
CH



PARADISE
REF: TSULPRDS

Flowy tank top. Single jersey.
Self-fabric collar and armholes. Racerback.
120 g/m² approx.
100% Cotton
GM - 85% Cotton / 15% Viscose



S	44/62
M	46/64
L	48/66
XL	50/68

WH
GM
BK
RD
NY



VICTORIA
REF: TSULVCTR

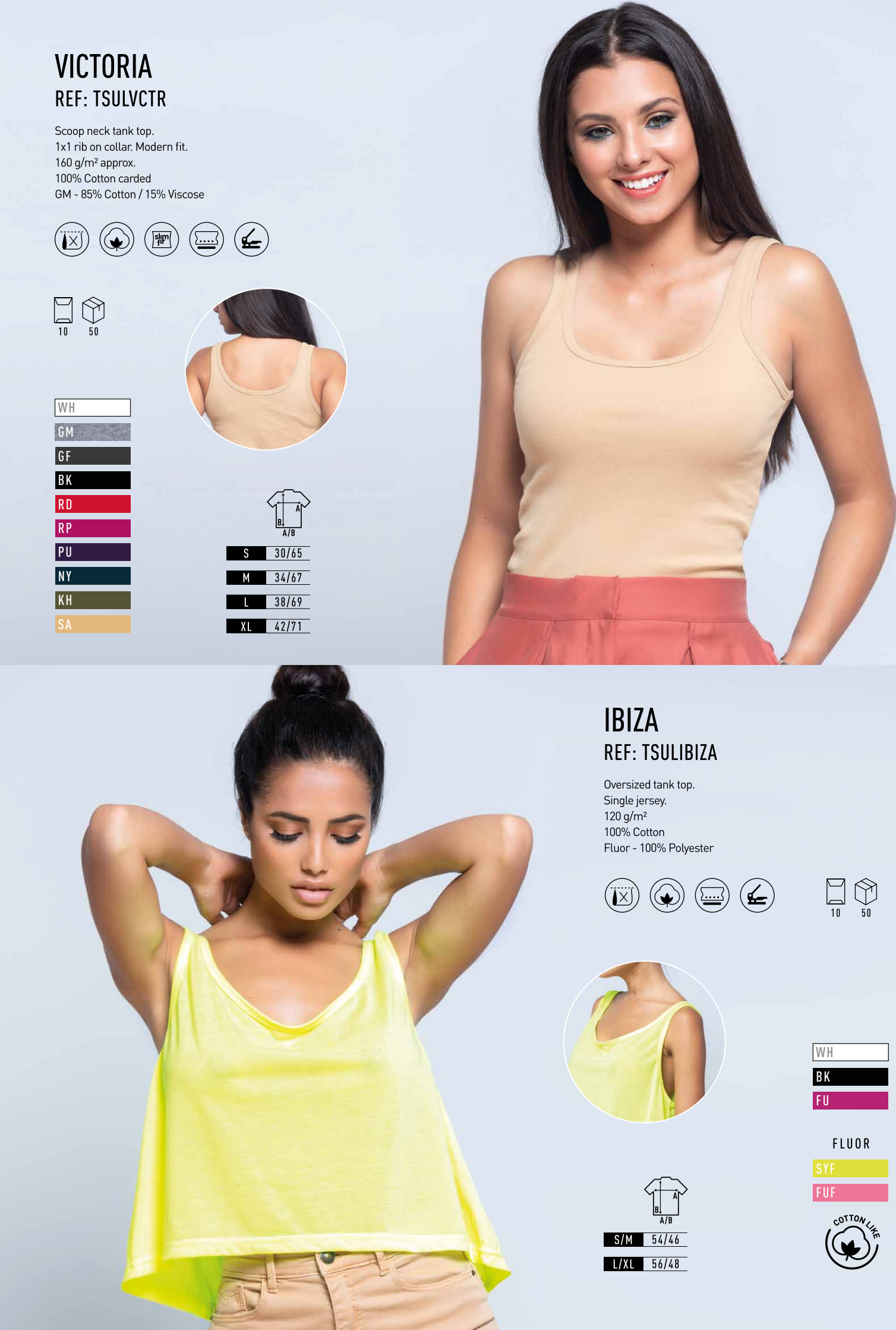
Scoop neck tank top.
1x1 rib on collar. Modern fit.
160 g/m² approx.
100% Cotton carded
GM - 85% Cotton / 15% Viscose



WH
GM
GF
BK
RD
RP
PU
NY
KH
SA



S	30/65
M	34/67
L	38/69
XL	42/71



IBIZA
REF: TSULIBIZA

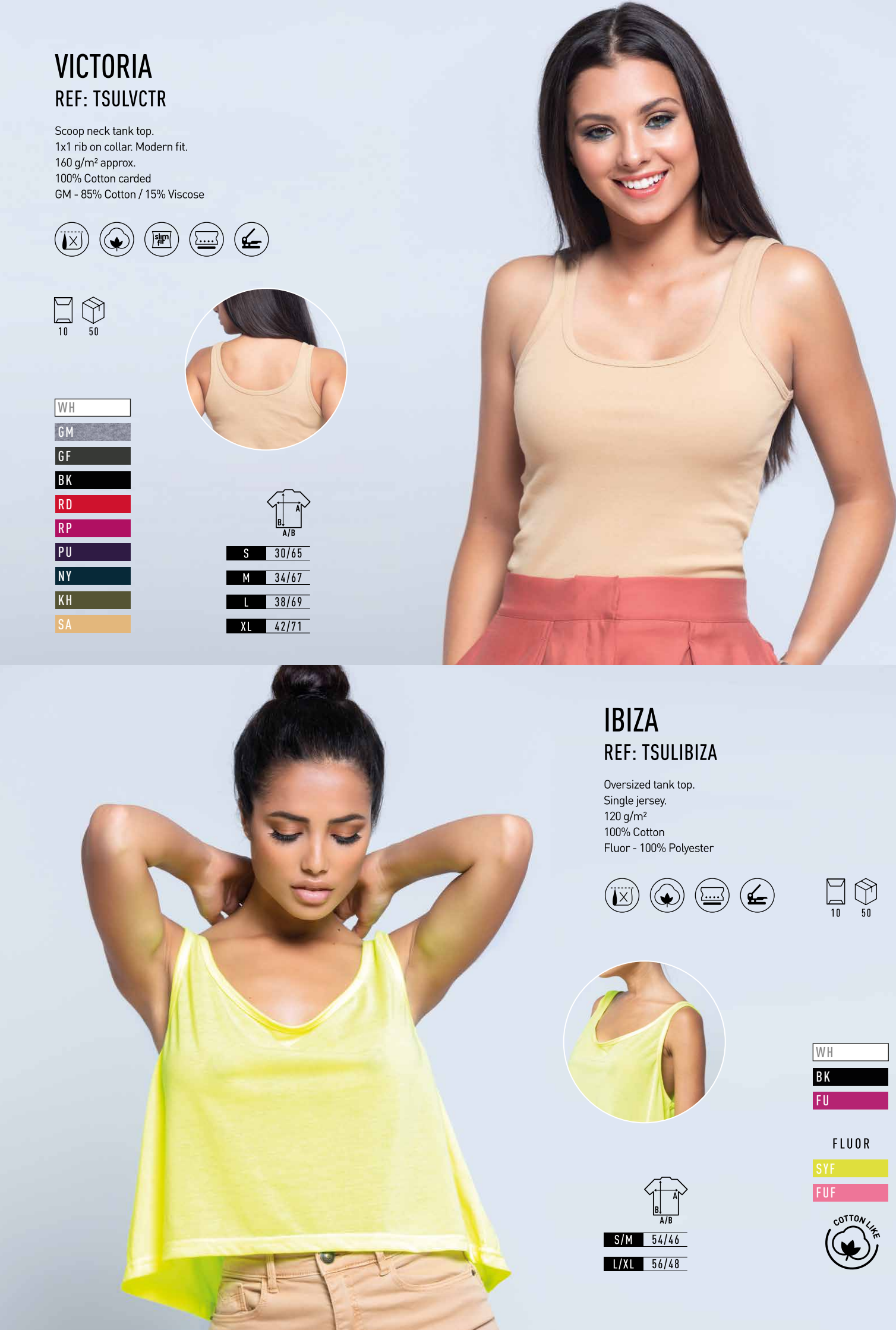
Oversized tank top.
Single jersey.
120 g/m²
100% Cotton
Fluor - 100% Polyester



S/M	54/46
L/XL	56/48

WH
BK
FU

FLUOR
SYF
FUF



SAONA
REF: TSULSAONA

Stretchy spaghetti straps.
Modern fit.
145 g/m²
90% Polyester / 10% Spandex



S	34/55
M	39/57
L	44/57
XL	46/59

WH
BK



MARTINICA
REF: TSULMRTNC

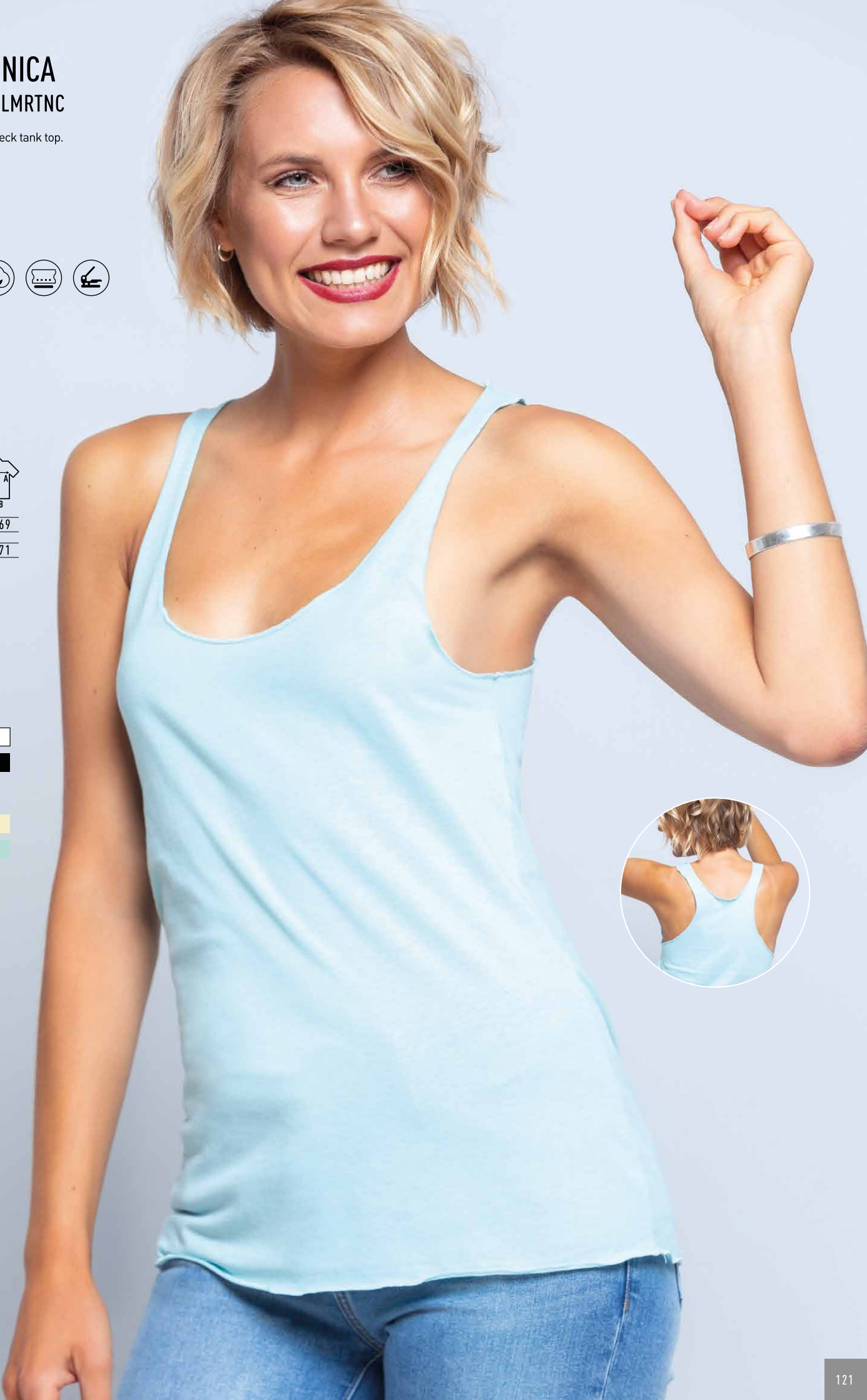
Deep scoop neck tank top.
Single jersey.
120 g/m²
100% Cotton



S/M	38/69
L/XL	41/71

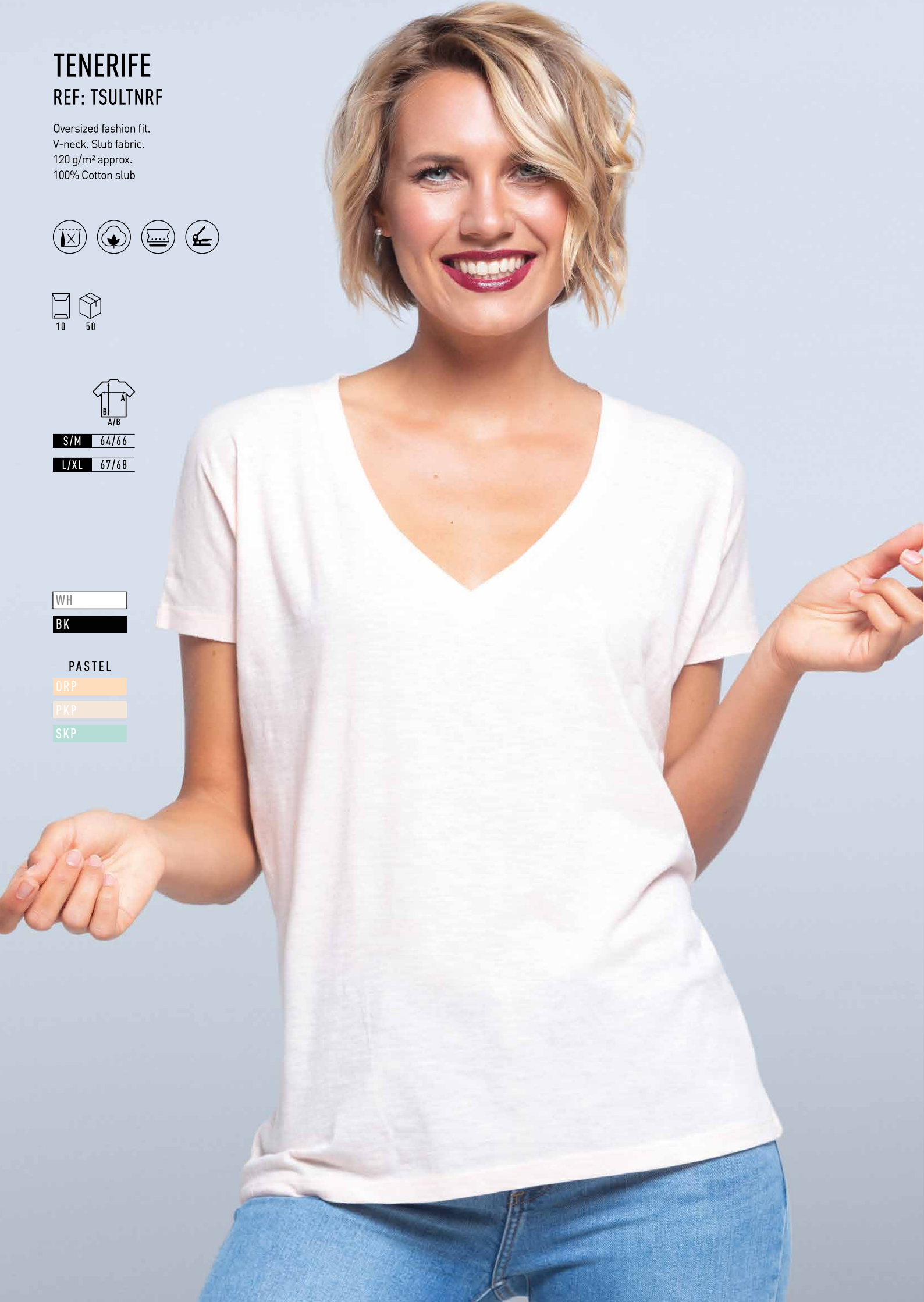
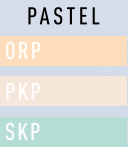
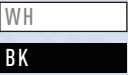
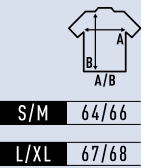
WH
BK

PASTEL
VAP
SKP



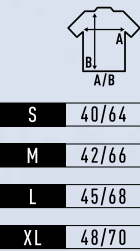
TENERIFE
REF: TSULTNRF

Oversized fashion fit.
V-neck. Slub fabric.
120 g/m² approx.
100% Cotton slub



SICILIA
REF: TSULSCL

V-neck. Single jersey.
Collar, sleeves and bottom with raw edges.
140 g/m² approx.
100% Cotton
AY - 95% Cotton / 5% Viscose



PALMA
REF: TSULPLM

Collar with raw edges.
Single jersey.
150 g/m²
100% Cotton
AY - 95% Cotton / 5% Viscose



S	48/66
M	50/68
L	52/70
XL	54/72

WH
AY
ZC
BK
MU
AL
AQ
DN
NY
MG
KH
SA



TRINIDAD
REF: TSULTRND

Open dolman sleeves.
Flowy draped fit. Single jersey.
140 g/m²
100% Cotton



S	43/65
M	45/67
L	47/69

WH
BK
CO
MG



TOBAGO
REF: TSULTBG

Low neckline. Single jersey.
Rolled sleeves.
140 g/m²
100% Cotton



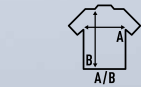
S	49/66
M	51/68
L	53/72

WH
BK
CO
MG



CORCEGA
REF: TSULCRCG

Tank top.
Single jersey.
120 - 125 g/m² approx.
100% Cotton



S/M	46/66
L/XL	49/68

WH
BK
PASTEL
GRP



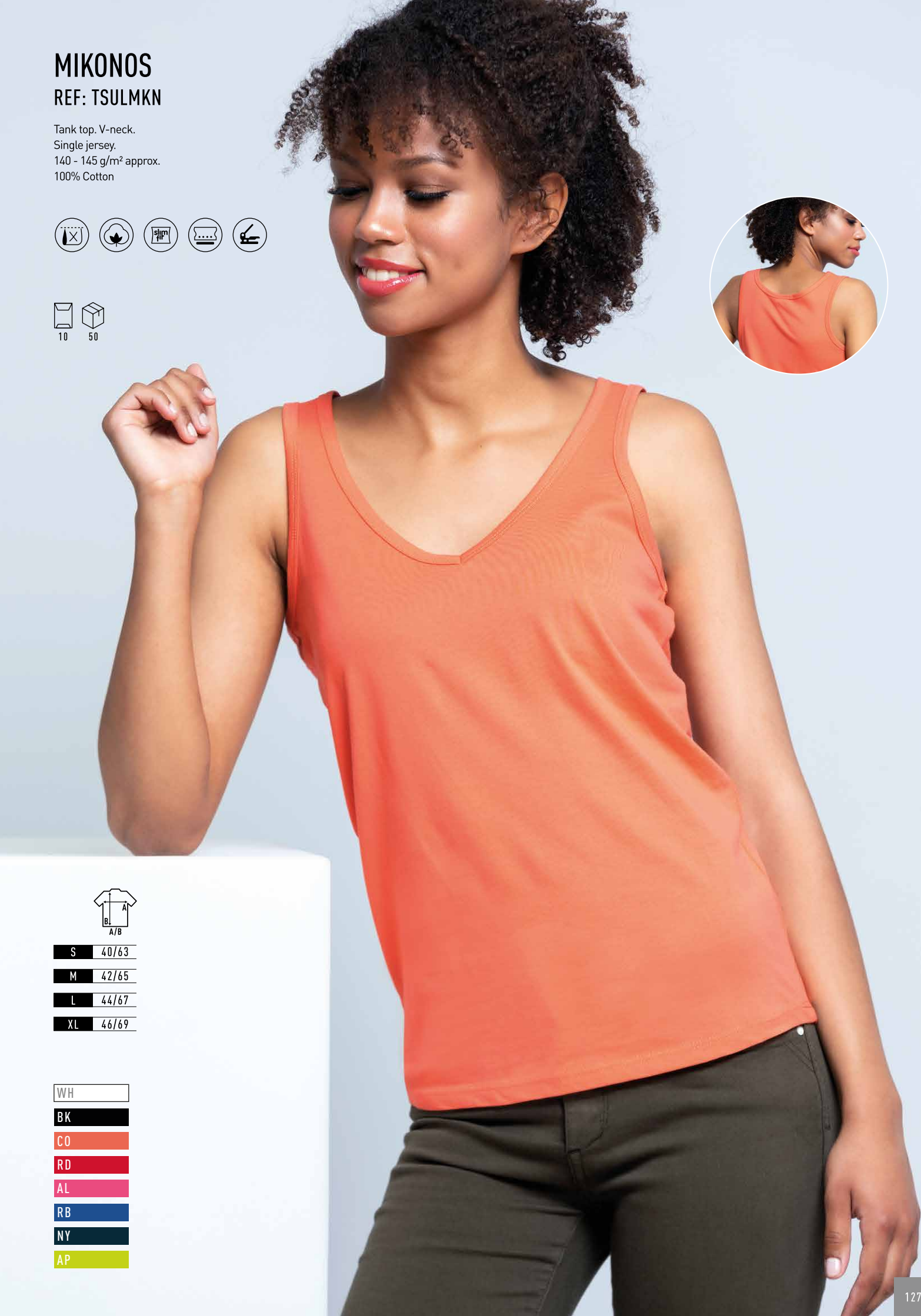
MIKONOS
REF: TSULMKN

Tank top. V-neck.
Single jersey.
140 - 145 g/m² approx.
100% Cotton



S	40/63
M	42/65
L	44/67
XL	46/69

WH
BK
CO
RD
AL
RB
NY
AP



CRETA
REF: TSULCRT

Low neckline.
1x1 rib on collar.
190 - 200 g/m² approx.
100% Cotton carded



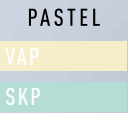
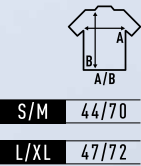
S	34/63
M	36/64
L	39/65
XL	42/66

WH
BK
PH
RD
RP
DN
NY
LM
CH



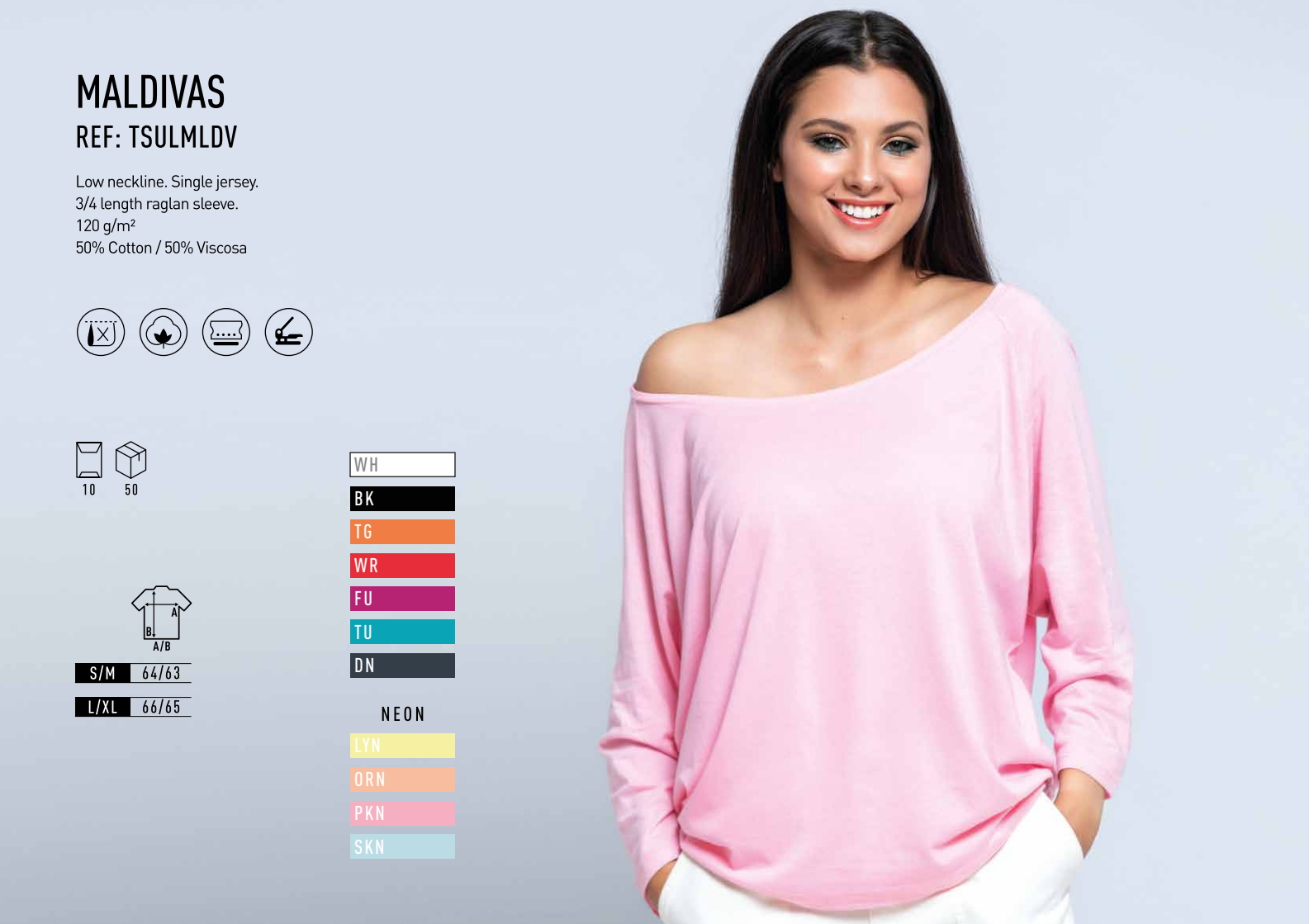
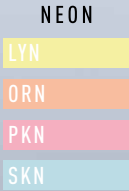
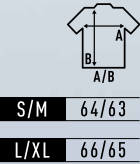
CAPRI
REF: TSULCPR

Scoop neck.
Rolled self-fabric collar.
Pocket on the left side.
120 g/m²
100% Cotton



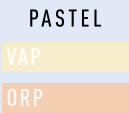
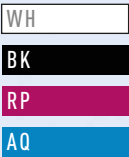
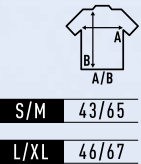
MALDIVAS
REF: TSULMLDV

Low neckline. Single jersey.
3/4 length raglan sleeve.
120 g/m²
50% Cotton / 50% Viscosa



PAPUA
REF: TSULPAPLS

Long-sleeve T-shirt. V-neck.
Single jersey.
Sleeves and hem with raw edges.
120 g/m²
50% Cotton / 50% Viscosa



KID URBAN SEA

REF: TSUKSEA

Decorative chain stitches on collar, sleeves and hem. Sleeves and hem with raw edges. Side vents.

155 g/m²

100% Cotton



	
1/2	29/40
3/4	32/44
5/6	35/49
7/8	38/52
9/11	41/58
12/14	43/61



KID URBAN BASEBALL

REF: TSUKBSB

Contrast color set-in collar and raglan sleeve. Side-seamed.

155 g/m²

100% Preshrunk cotton

GM - 85% Cotton / 15% Viscose



	
1/2	28/40
3/4	32/44
5/6	36/47
7/8	39/50
9/11	43/54
12/14	44/63

WH	BK
WH	RD
WH	GM
WH	RB
WH	NY





S P O R T L I N E



MAN SPORT T-SHIRT
REF: SPORTMAN

Raglan sleeve.
Decorative seams in the sleeves.
130 g/m² approx.
100% Polyester



- WH
- GF
- BK
- SY
- OR
- RD
- TU
- RB
- NY
- LM
- KH
- FLUOR
- SYF
- ORF
- N

FUF
- LMF

S	50/68
M	52/70
L	54/72
XL	56/74
XXL	58/79
3XL	60/81

NEW FINISH
WITH POSSIBILITY OF DRYING | 180°

LADY SPORT T-SHIRT
REF: SPORTLADY

Decorative seams in front,
back and sleeves.
Slightly fitted.
130 g/m² approx.
100% Polyester



- WH
- BK
- OR
- RD
- TU
- RB
- NY
- KH
- FLUOR
- SYF
- ORF
- FUF
- LMF



S	41/60
M	43/62
L	45/64
XL	47/66
XXL	49/68

NEW FINISH
WITH POSSIBILITY OF DRYING | 180°



KID SPORT T-SHIRT
REF: SPORTKID

Raglan sleeve.
Decorative seams in the sleeves.
130 g/m² approx.
100% Polyester



3/4	32/45
5/6	36/47
7/8	39/50
9/11	43/54
12/14	44/63

- WH
- BK
- RD
- RB
- NY
- FLUOR
- SYF
- ORF
- N

FUF
- LMF

NEW FINISH
WITH POSSIBILITY OF DRYING | 180°

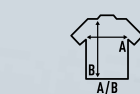




MAN ARUBA SPORT T-SHIRT

REF: SPORTARBM

Tank top. Racerback.
130 g/m² approx.
100% Polyester



S	49/66
M	51/68
L	53/70
XL	55/72
XXL	57/74

WH
BK
RD
RB

FLUOR

SYF
FUF

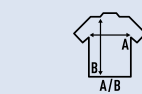
NEW FINISH
WITH POSSIBILITY OF DRYING | 180°



LADY ARUBA SPORT T-SHIRT

REF: SPORTARBL

Tank top. Slightly fitted.
Racerback.
130 g/m² approx.
100% Polyester



S	38/61
M	40/63
L	42/65
XL	44/67
XXL	46/69

WH
BK
RD
RB

FLUOR

SYF
FUF

NEW FINISH
WITH POSSIBILITY OF DRYING | 180°



MAN SPORT
PIQUE POLO
REF: SPORTPIQUE

Piqué fabric. Three-button placket with bottom box-stitch reinforcement. Neck tape in contrasting colour. Contrasting side slits. 150 - 160 g/m² approx. 100% Polyester



S	52/70
M	54/72
L	56/74
XL	58/76
XXL	60/78

WH
BK
OR
RD
RB
AQ
NY
FLUOR
LMF



NEW FINISH
WITH POSSIBILITY OF DRYING | 180°

LADY SPORT PIQUE POLO
REF: SPORTPQLADY

Piqué fabric. Three-button placket with bottom box-stitch reinforcement. Slightly fitted. Neck tape in contrasting colour. Contrasting side slits. 150 - 160 g/m² approx. 100% Polyester



S	42/61
M	44/63
L	46/65
XL	48/67
XXL	50/69
3XL	54/73

WH
BK
RD
RB
AQ
NY
FLUOR
FUF

NEW FINISH
WITH POSSIBILITY OF DRYING | 180°



KID SPORT PIQUE POLO
REF: SPORTPQKID

Piqué fabric. Two-button placket with bottom box-stitch reinforcement. Neck tape in contrasting colour. Contrasting side slits. 150 - 160 g/m² approx. 100% Polyester



3/4	33/42
5/6	37/46
7/8	39/51
9/11	42/57
12/14	44/64

WH
RD
RB
NY

NEW FINISH
WITH POSSIBILITY OF DRYING | 180°



NEW



NUEVO ACABADO | 180°
CON POSIBILIDAD DE SECADO

MAN HEAVY SPORT PIQUE POLO

REF: SPHEAVYMEN

Piqué fabric. Three-button placket
with bottom box-stitch reinforcement.
Neck tape in contrasting colour.
Contrasting side slits.
200 - 210 g/m² approx.
100% Polyester



S	52/70
M	54/72
L	56/74
XL	58/76
XXL	60/78

WH	NY
SL	GRA
CHC	RD
BK	SL
RD	NY
RB	SL
NY	SL



LADY HEAVY SPORT PIQUE POLO

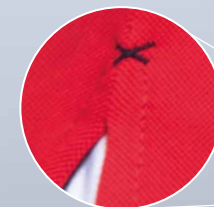
REF: SPHEAVYLDY

Piqué fabric. Three-button placket
with bottom box-stitch reinforcement.
Retail fit. Neck tape in contrasting colour.
Contrasting side slits.
200 - 210 g/m² approx.
100% Polyester



S	42/61
M	44/63
L	46/65
XL	48/67
XXL	50/69
3XL	54/73

WH	NY
SL	GRA
CHC	RD
BK	SL
RD	NY
RB	SL
NY	SL

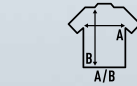


MAN REGULAR SPORT T-SHIRT

REF: SPORTRGLM

High performance men's sports t-shirt.
Interlock fabric. Silk touch.
140 g/m² approx.
100% Polyester

Silk touch



S	44/70
M	48/72
L	52/73
XL	56/76
XXL	59/79

WH	
BK	
RD	
TU	
RB	
FLUOR	
SYF	
ORF	
LMF	



MAN SPORT CONTRAST

REF: SPORTCTRM

Contrast raglan sleeves.
Decorative stitching on sleeves.
130 g/m²
100% Polyester



S	50/68
M	52/70
L	54/72
XL	56/74
XXL	58/79
3XL	60/81

WH	BK
WH	RD
WH	RB
WH	NY



MAN LS SPORT T-SHIRT

REF: SPORTMANLS

Raglan sleeves.
Decorative stitch on the neck,
shoulders and sleeves.
130 g/m² approx.
100% Polyester



S	50/68
M	52/70
L	54/72
XL	56/74
XXL	58/79

WH	
BK	
RD	
RB	
FLUOR	
SYF	
ORF	
LMF	

NEW FINISH
WITH POSSIBILITY OF DRYING | 180°



LADY LEGGINGS

REF: SPLEGGINS

Stretch legging with elastic waistband.
180 g/m²
65% Polyester / 30% Cotton / 5% Spandex
GM - 82% Cotton / 13% Viscosa / 5% Spandex



XS	30/90
S	32/92
M	34/94
L	36/96
XL	38/98

WH	
GM	
BK	





A C T I V E L I N E



LIGA / KID LIGA
REF: LIGATSA / LIGATSK

Adult and kids' t-shirt.
Interlock with ventilation zones made
of mesh. Curved drop back hem.
140 g/m²
100% Polyester



KID	A/B
5/6	33/48
3XS	36/51
2XS	38/54
XS	40/58
S	44/61



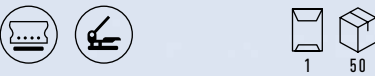
ADULT	A/B
S	47/65
M	51/70
L	54/72
XL	57/75
XXL	60/77



WH
BK
RD
RB
GR

PREMIER / KID PREMIER
REF: PREMIERTSA / PREMIERTSK

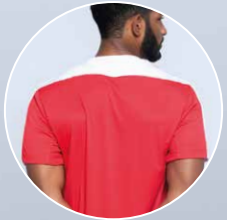
Vertical striped soccer jersey for adults and kids.
V-neck.
140 g/m²
100% Polyester



KID	A/B
5/6	33/48
3XS	36/51
2XS	38/54
XS	40/58
S	44/61



ADULT	A/B
S	47/65
M	51/70
L	54/72
XL	57/75
XXL	60/77



WH/BK
SY/BK
WH/RD
RB/RD
WH/RB
WH/GR
RB/BK
RD/BK

BK/SYF
ORF/BK
WH/RD
FU/WH
RB/WH
GR/WH
RD/WH



CALCIO / KID CALCIO
REF: CALCIOTSA / CALCIOTSK

Adult and kids' t-shirt. Interlock with
contrasting colour ventilation zones made of mesh.
140 g/m²
100% Polyester



KID	A/B
5/6	33/48
3XS	36/51
2XS	38/54
XS	40/58
S	44/61



ADULT	A/B
S	47/65
M	51/70
L	54/72
XL	57/75
XXL	60/77

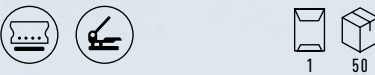


WH/BK
WH/RD
RB/RD
WH/RB
WH/GR
RB/BK
RD/BK



CELTIC / KID CELTIC
REF: CELTICTSA / CELTICTSK

Adult and kids' t-shirt with horizontal stripes.
V-neck.
140 g/m²
100% Polyester



KID	A/B
5/6	33/48
3XS	36/51
2XS	38/54
XS	40/58
S	44/61



ADULT	A/B
S	47/65
M	51/70
L	54/72
XL	57/75
XXL	60/77



UNDERWEAR T-SHIRT
KID UNDERWEAR T-SHIRT
REF: UNDERTSA / UNDERTSK

Adult and kids' underwear t-shirt.
Raglan sleeves. Interlock fabric.
140 g/m²
100% Polyester



KID	
5/6	29/52
3XS	30/54
2XS	31/56
XS	32/58
S	33/60

ADULT	
S	39/66
M	41/68
L	44/71
XL	47/74
XXL	50/77

WH
BK
RD
RB
GR



LEGEND / KID LEGEND
REF: LEGENDGLA / LEGENDGLK

Adult and kids' goalkeeper t-shirt.
Combined in two colors.
Padded elbows to absorb impacts.
140 g/m²
100% Polyester



KID	
5/6	33/40
3XS	35/45
2XS	39/49
XS	46/59
S	48/72



ADULT	
M	52/74
L	56/76
XL	60/78
XXL	66/81



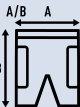
BK/SYF
BK/FUF

STADIUM / KID STADIUM
REF: STADIUMGLA / STADIUMGLK

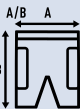
Adult and kids' goalkeeper shorts.
Padded on hips for protection.
200 g/m²
100% Polyester



KID	
5/6	26/42
3XS	28/43
2XS	30/45
XS	32/46
S	34/48



ADULT	
M	36/49
L	38/51
XL	40/52
XXL	42/54



BK

ELITE SOCKS
REF: ELITESOCK

Adult and kids' socks.
JHK logo on one side.
97% Polyester / 3% Spandex



HEIGHT/LENGTH			
34/36	40/20		
37/39	43/22		
40/42	46/24		

WH
BK
SY
RD
FU
RB
GR



ELITE / KID ELITE
REF: ELITESHA / ELITESHK

Adult and kids' basic team short.
Elastic waistband with matching drawcord.
140 g/m² approx.
100% Polyester



KID			
5/6	25/31		
3XS	27/33		
2XS	28/37		
XS	30/40		
S	32/41		

ADULT			
M	34/43		
L	39/45		
XL	43/46		
XXL	50/48		

WH
BK
RD
FU
RB
GR



DERBY
REF: DERBYBAG

Sport bag. Side pockets.
Protective base feet.
Adult bag available also without logo.
100% Polyester



	LENGTH/HEIGHT	HEIGHT
KID (S)	27/44	34
ADULT (XL*)	35/55	40

*XL W/O Adult bag without logo.

BK/SYF
NY/FUF

RIVER SWEAT

KID RIVER SWEAT

REF: RIVERSWA / RIVERSWK

Adult and kids' sweatshirt combined in two colors.
Trim and half moon back under the collar in contrast.
140 g/m² approx.
65% Polyester / 35% Cotton



KID	
5/6	39/46
3XS	42/53
2XS	46/58
XS	51/63
S	54/66

ADULT	
M	57/69
L	60/72
XL	63/76
XXL	66/78



RIVER PANTS

KID RIVER PANTS

REF: RIVERPTA / RIVERPTK

Adult and kids' pants.
Elastic waistband with matching drawcord.
Drawstring, pockets, side trim and zipper in contrast.
290 g/m² approx.
65% Polyester / 35% Cotton



KID	
5/6	38/60
3XS	39/68
2XS	42/78
XS	47/88
S	52/100

ADULT	
M	54/102
L	56/104
XL	58/106
XXL	60/108



WEMBLEY

REF: WEMBLEYRCA

Windbreaker. Full zip.
Contrast decorative edging.
Hand pockets. Elasticated cuffs.
Hood with brackets.
100% Polyester



XS	50/62
S	59/65
M	61/66
L	63/67
XL	65/68
XXL	67/69





Workwear



WE MANUFACTURE WORKWEAR
AND UNIFORMS FOR BUSINESSES

Souvenir Merchandising



Fashion



WE PRODUCE CUSTOM GARMENTS
FOR SOUVENIRS

WE CREATE YOUR CLOTHING BRAND

Send us an email to marketing@jhktshirt.com and we will contact you.

*Consult minimums by type of garment and color.

COLORES / COLOURS



WASHED COLOURS



AG AMAZONIA GREEN




CR CANARY RED




LS LIME STONE


PASTEL



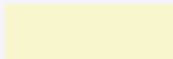
ORP ORANGE PASTEL



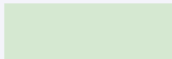
PKP PINK PASTEL



SKP SKY BLUE PASTEL




VAP VANILLA PASTEL




GRP GREEN PASTEL


NEON COLOURS




SKN SKY NEON



ORN ORANGE NEON




PKN PINK NEON




LYN LIGHT YELLOW NEON


SLUB




SKN SKY NEON




ORN ORANGE NEON




PKN PINK NEON



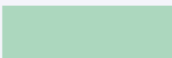
LYN LIGHT YELLOW NEON



WH WHITE




BK BLACK




MG MINT GREEN


FLUOR




LMF LIME FLUOR



FUF FUCSIA FLUOR



ORF ORANGE FLUOR



SYF GOLD FLUOR

Cotton

 <p>WH WHITE</p>	 <p>AS ASH MELANGE</p>	 <p>AY ASH GREY</p>	 <p>GM GREY MELANGE</p>	 <p>ZC ZINC</p>	 <p>GF GRAPHITE</p>	 <p>SY GOLD</p>
 <p>MU MUSTARD</p>	 <p>PH PEACH</p>	 <p>TG TANGERINE</p>	 <p>CO CORAL</p>	 <p>OR ORANGE</p>	 <p>BK BLACK</p>	 <p>LY LIGHT YELLOW</p>
 <p>BC BRICK</p>	 <p>WR WARM RED</p>	 <p>RD RED</p>	 <p>BU BURGUNDY</p>	 <p>CA CARDINAL</p>	 <p>RP RASPBERRY</p>	 <p>TU TURQUOISE</p>
 <p>SK SKY BLUE</p>	 <p>PU PURPLE</p>	 <p>LV LAVENDER</p>	 <p>PK PINK</p>	 <p>AL AZALEA</p>	 <p>FU FUCSIA</p>	 <p>AZ AZZURE</p>
 <p>AQ AQUA</p>	 <p>RB ROYAL BLUE</p>	 <p>SB STEEL BLUE</p>	 <p>DN DENIM</p>	 <p>NY NAVY</p>	 <p>IB ICE BLUE</p>	 <p>PG PALE GREEN</p>
 <p>CM CAMOUFLAGE</p>	 <p>FG FOREST GREEN</p>	 <p>BG BOTTLE GREEN</p>	 <p>PT PISTACHIO</p>	 <p>LM LIME</p>	 <p>KG KELLY GREEN</p>	 <p>CH CHOCOLATE</p>
 <p>BR BROWN</p>	 <p>WA WALNUT</p>	 <p>SA SAND</p>	 <p>AR ARMY</p>	 <p>KH KHAKI</p>	 <p>MG MINT GREEN</p>	

Heather Colours



CHCH CHARCOAL HEATHER



MUH MUSTARD HEATHER



BUH BURGUNDY HEATHER



LVH LAVENDER HEATHER



TUH TURQUOISE HEATHER










DNH DENIM HEATHER



BGH BOTTLE GREEN HEATHER

POLYESTER

 <p>WH WHITE</p>	 <p>GF GRAPHITE</p>	 <p>BK BLACK</p>	 <p>SY GOLD</p>	 <p>OR ORANGE</p>	 <p>RD RED</p>	 <p>TU TURQUOISE</p>
 <p>AQ AQUA</p>	 <p>RB ROYAL BLUE</p>	 <p>NY NAVY</p>	 <p>KH KHAKI</p>	 <p>LM LIME</p>		
FLUOR						
 <p>SYF GOLD FLUOR</p>	 <p>ORF ORANGE FLUOR</p>	 <p>FUF FUCSIA FLUOR</p>	 <p>LMF LIME FLUOR</p>			

The product features are described in good faith, not with standing human error or omission. JHK reserves the right to make changes to it's products without notification. This data is for informational purposes only. It does not represent a sales contract.
The returns of garments already printed, embroidered, etc, will not be accepted.

